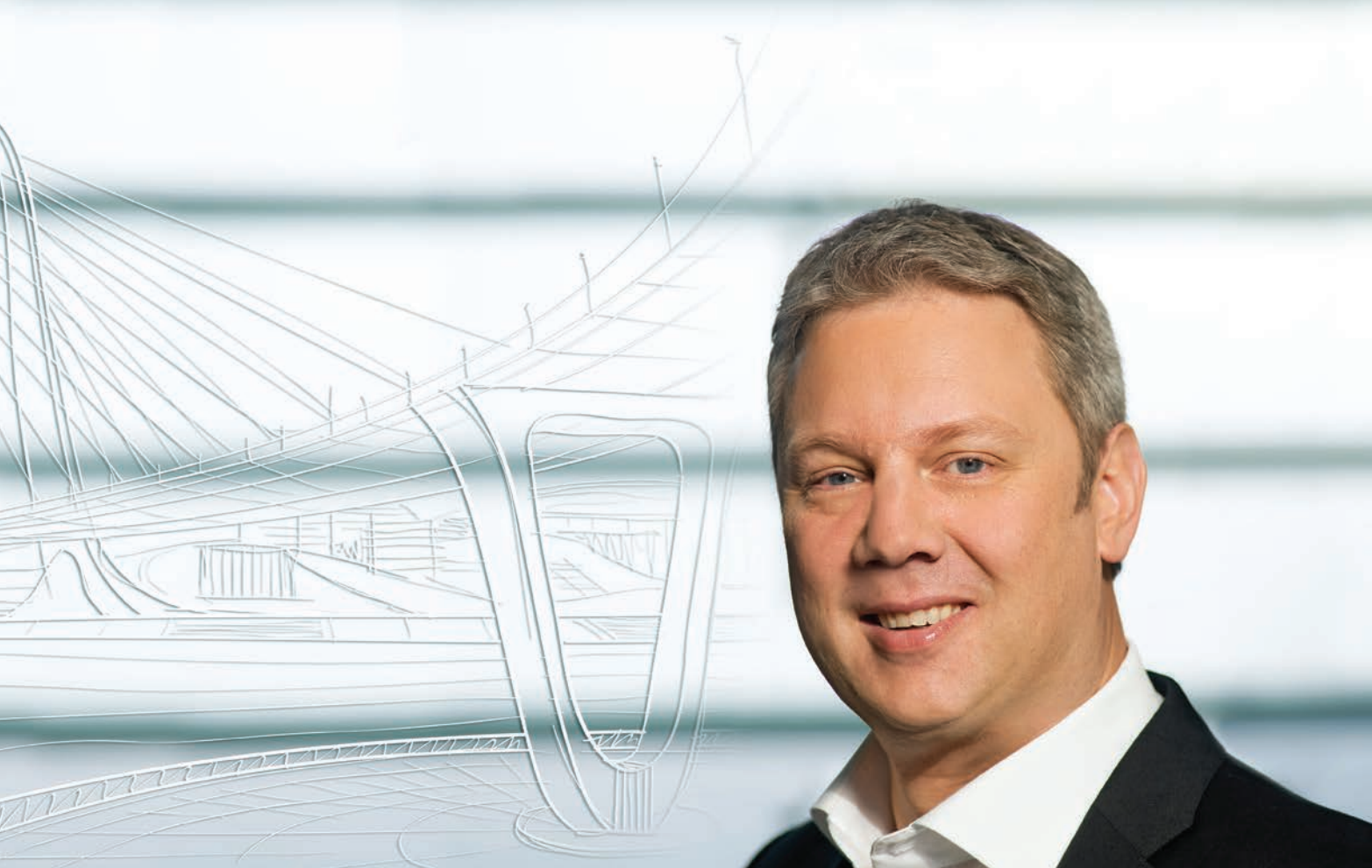




Dental catalogue
SHERACLASSIC

2014 / 2015



The SHERA-bridge

It is based on a solid foundation and strong pillars. It combines different fields of dental technology while symbolizing the intelligent combination of traditional handcraft and modern CAD/CAM technology: the SHERA-bridge. Thus, SHERAClassic as well as SHERAdigital being clearly presented in two different catalogues are part of our comprehensive dental programme.

No matter which side of the bridge you are looking at, the foundation is built of 30 years of experience in the field of dental technology. We understand your work. The pillars, the bridge rests on, are the staff members of SHERA. You can put your faith in highly motivated, competent and qualified employees. We are pleased to accompany you while working with innovative dental technology.

Yours faithfully,

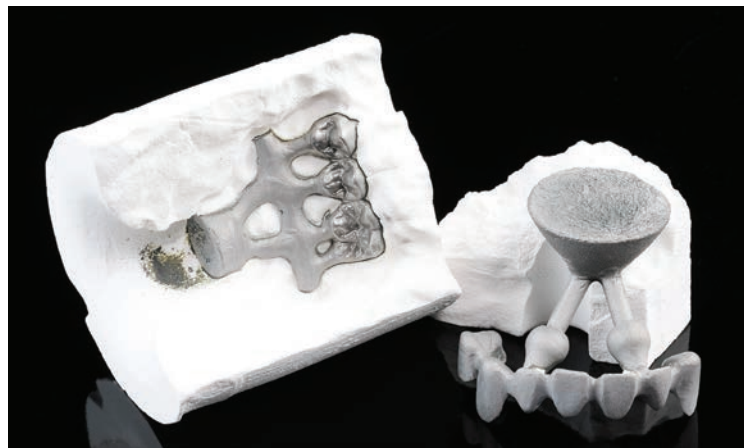
Jens Grill

Director

Home-made is appreciated – SHERA production and quality assurance



We develop and produce by ourselves: Day by day, we produce 13.5 tons of stones and plasters, three tons of investments and a half ton of silicone in Lemfoerde. We mix thousands of litres of liquid and much more. Home-made means being able to influence the quality.



We know how to keep to our quality standard at any time. Our customers have been relying on the quality of more than 500 products – for more than 30 years.



In our warehouse with 700 storing positions the export deliveries are ready for their transport throughout the world. In our distribution



warehouse our employees commission generally all deliveries for the German market within 24 hours. You can rely on us!

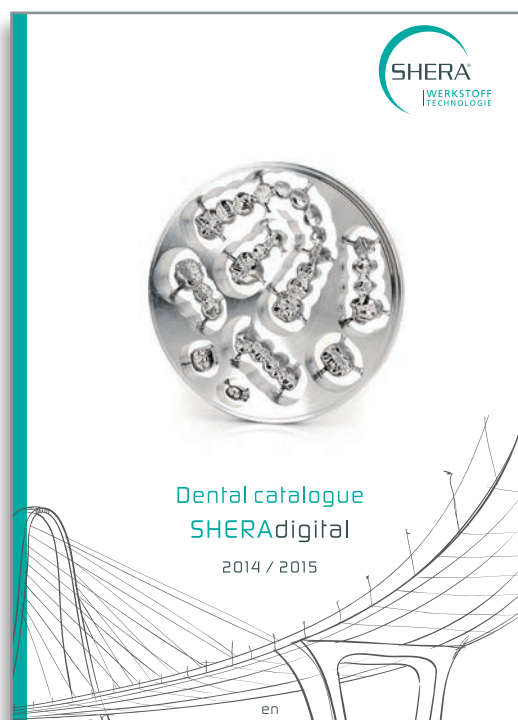


SHERAdigital

- made for the work of men

It is important for us, that machines are made for the work of men. Excellent modern CAD/CAM technology should make your handicraft become easier. Your needs play the main role. We offer feasible and suitable CAD/CAM solutions. It does not matter which system we have, but rather what you need. Hence, we compiled

several scanners and digital milling machines for our SHERAdigital programme while meeting all kinds of demands and considering economic solutions. The CAD/CAM product range from SHERA is conceived as an open system being individually combinable and expandable. Thus, you stay flexible and independent.



Dental catalogue **SHERAdigital**

You do not have it yet? Order our special catalogue SHERAdigital by calling + 49 (0) 54 43 - 99 33 - 0 or by sending an e-mail to info@shera.de. For further information, have a look at our homepage www.shera.de.

Behind every machine stands an intelligent person

During the introduction into the SHERAdigital programme, a whole team of experienced dental technicians and CAD/CAM experts assist you. They combine dental technician know-how and profound knowledge of material engineering. The economist/dental technician Timm Gerling, the master dental technician Ralf Oppacher, the graduated engineer of dental technology Guido Sieker as well as the master dental technician Martin Becker of the SHERAdigital team assist

you competently and with great pleasure. According to your demand, it is possible whether in an individual meeting, an online conference, an online seminar or during a training at our premises near the lake Duemmer. Contact us!



SHERAdigital

Order your SHERAdigital catalogue. We compiled clearly all system components and products supporting your proceedings in digital dental

technology. As we constantly keep on extending our SHERAdigital programme, we summarised it in our special catalogue – comprising more than 30 pages.



The core of the SHERAdigital programme form the versatile scanners of SHERAeco-scan as well as the efficient milling machines SHERAeco-mill with four or five axes for highly precised and economic CAD/CAM results.

We compiled an open digital system in order to make sure that you stay independent. The sintering furnaces from Nabertherm and DEKEMA as well as the suction device Zubler V6000 complete the SHERAdigital range.

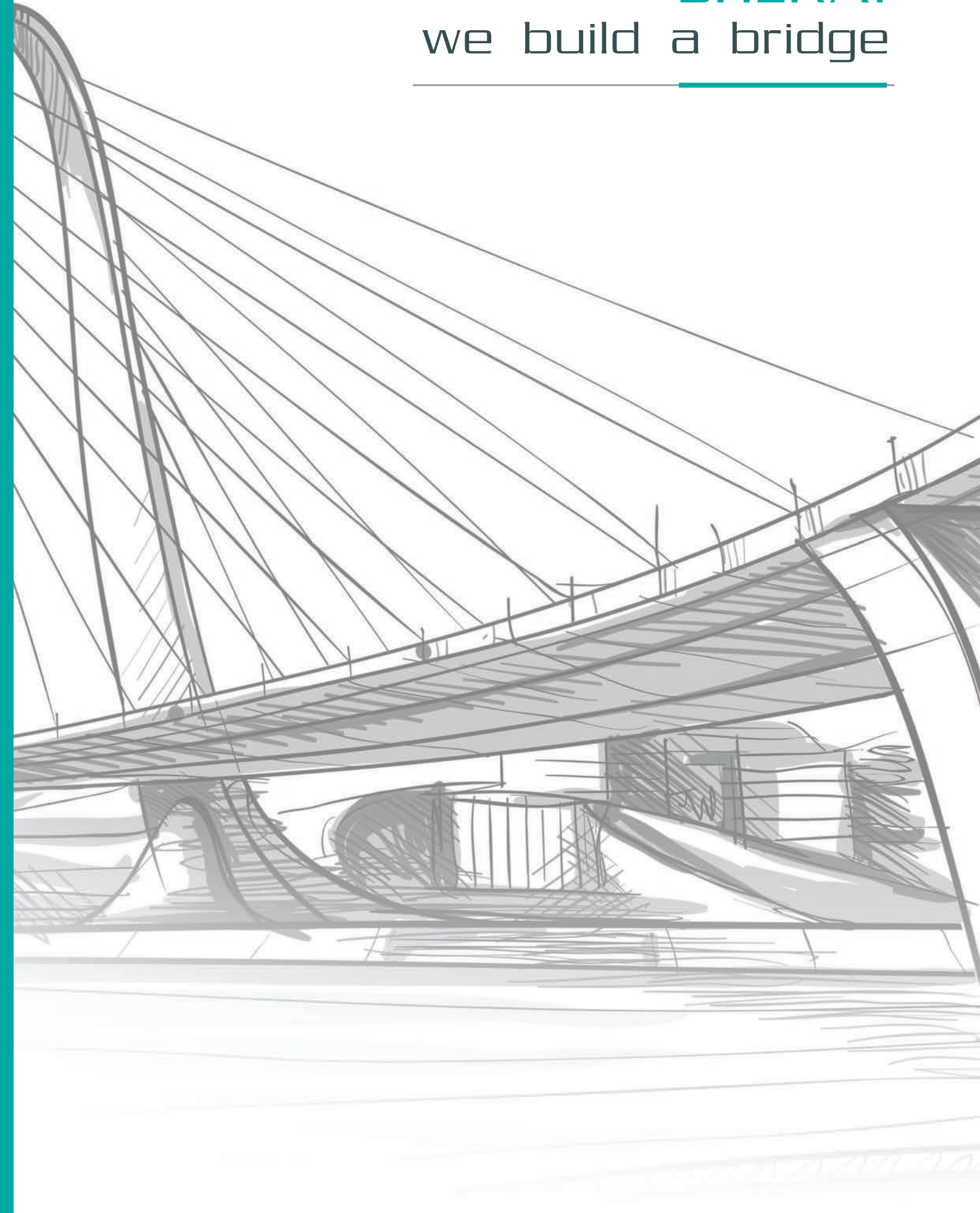
Find more materials of the modern dental technology in your SHERAdigital catalogue!



We have ensured a high and homogeneous quality of the milling discs of zirconium, acrylic, wax and non-precious alloys. Among them are the special materials SMILE-CAM and TSM ACETAL DENTAL. Long-lasting radius and

flat milling burs of the SHERAeco-tool range for different machines and materials as well as further useful CAD/CAM accessories, such as SHERAscanspray or SHERAscan-wax round off the SHERAdigital range.

SHERA: we build a bridge



Preparation

Stones / Plasters
Impression Material Treatment
Isolating Agents
Adhesives
Pins
Silicones

page **13**

Casting Technique

Waxes and Others
Investments
Embedding Accessories
Duplication Systems
Alloys
Soldering Agents

page **39**

Finishing

Abrasives
Occlusion Sprays
Cutting Discs
Polishers
Polishing Agents
Brushes

page **67**

Acrylics

Denture Acrylics
Orthodontic Acrylic
Separating Agent
Tray Materials

page **81**

Miscellaneous

Cleaning Agents
Skin Care
Brushes

page **87**



Preparation



Stones / Plasters 15



Impression Material
Treatment 30



Isolating Agents 31



Adhesives 32



Pins 33



Silicones 34



Stones and Plasters

As one of the market leader for dental stones and plasters, we lay great emphasis on the quality while developing and producing. All SHERA stones and plasters are compatible with alginate, silicone, polyether as well as hydrocolloid impressions and offer excellent technical advantages such as:



- very fine grained consistency
- excellent flow characteristics
- good thixotrope quality



- firm margins even around thin preparations
- easy processing: sawing, grinding, trimming without splintering



- precise reproduction of details
- smooth, dense surfaces
- consistent technical data.

Our product range includes perfect stones and plasters for any application: from working to presentation models, or from CAD/CAM to opposing models. Altogether, we have 17 special , for several applications in 18 different colours. Among them is our bestseller SHERAHARD-ROCK.



SHERAHARD-ROCK

Super hard stone, superior quality

- good thixotrope quality and very good flow characteristics
- can be scanned with several systems
- ideal for plastic basing systems
- extreme easy processing

Item no.	Unit	Item no.	Unit
101025-18 (golden brown)	18 kg	101023-18 (golden brown)	4.5 kg sachet
101025-20 (golden yellow)	(4 x 4.5 kg)	101023-20 (golden yellow)	
101025-84 (light yellow)		101023-84 (light yellow)	
101025-85 (light green)		101023-85 (light green)	

Recommended for: ✓ implant technique
 ✓ sectioned models
 ✓ master models
 ✓ opposing models
 ✓ static models

Technical specifications

mixing ratio (p : dw)*	100 : 20
hardness after 2 h (MPa; N/mm ²)	300
hardness after 24 h (MPa; N/mm ²)	320
compressive strength after 1 h (MPa; N/mm ²)	70
compressive strength after 1 h (psi)	10,150
setting expansion after 2 h (%)	< 0.10
working time (min)	5.0 - 6.0
end of setting (min)	approx. 30

*mixing ratio = powder : distilled water

Stones Type 4

Modelling and die stones



SHERAMAXIMUM 2000

Super hard stones for especially high demands

- good thixotrope quality and very good flow characteristics
- can be scanned with several systems
- ideal for plastic basing systems
- exceptional hardness

Recommended for: ✓ implant technique
✓ sectioned models
✓ master models
✓ opposing models
✓ static models

Item no.	Unit
101015-18 (golden brown)	18 kg (4 x 4.5 kg)
101015-22 (grey)	
101015-46 (rich yellow)	
101015-70 (white)	
101015-84 (light yellow)	
101013-18 (golden brown)	4.5 kg sachet
101013-22 (grey)	
101013-46 (rich yellow)	
101013-70 (white)	
101013-84 (light yellow)	

Technical specifications

mixing ratio (p : dw)*	100 : 20
hardness after 2 h (MPa; N/mm ²)	310
hardness after 24 h (MPa; N/mm ²)	340
compressive strength after 1 h (MPa; N/mm ²)	64
compressive strength after 1 h (psi)	9,280
setting expansion after 2 h (%)	0.10
working time (min)	6.0 - 7.0
end of setting (min)	approx. 30

*mixing ratio = powder : distilled water

www.shera.de

SHERAMAXIMUM

Super hard stone for high demands

- high thixotrope quality
- can be scanned with several systems
- very hard, nevertheless extreme easy processing

Recommended for: ✓ sectioned models
✓ master models
✓ opposing models
✓ static models

Item no.	Unit
101040-14 (yellow)	20 kg
101040-18 (golden brown)	
101040-22 (grey)	
101041-14 (yellow)	5 kg
101041-18 (golden brown)	
101041-22 (grey)	

Technical specifications

mixing ratio (p : dw)*	100 : 20
hardness after 2 h (MPa; N/mm ²)	300
hardness after 24 h (MPa; N/mm ²)	320
compressive strength after 1 h (MPa; N/mm ²)	62
compressive strength after 1 h (psi)	8,990
setting expansion after 2 h (%)	0.10
working time (min)	6.0 - 7.0
end of setting (min)	approx. 30

Stones Type 4

Modelling stones

SHERA PURE

Super hard stone



easily redable • colour reduced
non splintering • extreme hardness

available in



cream white and light grey



Created by Andreas Nolte

Recommended for: ✓ implant technique
✓ sectioned models
✓ master models
✓ opposing models
✓ static models

Item no.	Unit
101155-25 (light grey)	18 kg (6 x 3 kg)
101155-82 (cream white)	
101153-25 (light grey)	3 kg sachet
101153-82 (cream white)	

Technical specifications

mixing ratio (p : dw)*	100 : 20
hardness after 2 h (MPa; N/mm ²)	310
hardness after 24 h (MPa; N/mm ²)	330
compressive strength after 1 h (MPa; N/mm ²)	70
compressive strength after 1 h (psi)	10,150
setting expansion after 2 h (%)	0.08
working time (min)	6.0 - 7.0
end of setting (min)	approx. 30

*mixing ratio = powder : distilled water

www.shera.de

Stones Type 4

Modelling and die stones



SHERAPREMIUM

Super hard stone

- top price-performance ratio
- reduced working time

Recommended for: ✓ sectioned models
✓ master models
✓ model casting works
✓ opposing models
✓ static models

Item no.	Unit
101070-02 (apricot)	20 kg
101070-10 (ivory)	
101070-14 (yellow)	
101070-18 (golden brown)	
101070-22 (grey)	
101070-30 (light green)	
101070-70 (white)	
101071-02 (apricot)	5 kg
101071-10 (ivory)	
101071-14 (yellow)	
101071-18 (golden brown)	
101071-22 (grey)	
101071-30 (light green)	
101071-70 (white)	

Technical specifications

mixing ratio (p : dw)*	100 : 20
hardness after 2 h (MPa; N/mm ²)	270
hardness after 24 h (MPa; N/mm ²)	290
compressive strength after 1 h (MPa; N/mm ²)	60
compressive strength after 1 h (psi)	8,700
setting expansion after 2 h (%)	0.10
working time (min)	4.5 - 5.5
end of setting (min)	approx. 30

*mixing ratio = powder : distilled water

www.shera.de

SHERAAQUA

Super hard stone

- top price-performance ratio
- reduced working time
- creamy consistency

Recommended for: ✓ sectioned models
✓ master models
✓ model casting works
✓ opposing models
✓ static models

Item no.	Unit
101080-18 (golden brown)	20 kg
101080-50 (pink)	
101080-70 (white)	
101081-18 (golden brown)	5 kg
101081-50 (pink)	
101081-70 (white)	

Technical specifications

mixing ratio (p : dw)*	100 : 23
hardness after 2 h (MPa; N/mm ²)	250
hardness after 24 h (MPa; N/mm ²)	270
compressive strength after 1 h (MPa; N/mm ²)	57
compressive strength after 1 h (psi)	8,265
setting expansion after 2 h (%)	0.10
working time (min)	4.5 - 5.5
end of setting (min)	approx. 30

Stones Type 4 / 5

Modelling and die stones



SHERAFAVORIT

Resin-reinforced super hard stone

- for hard impression materials
- easy to remove
- excellent for pouring out fine preparations or undercuts

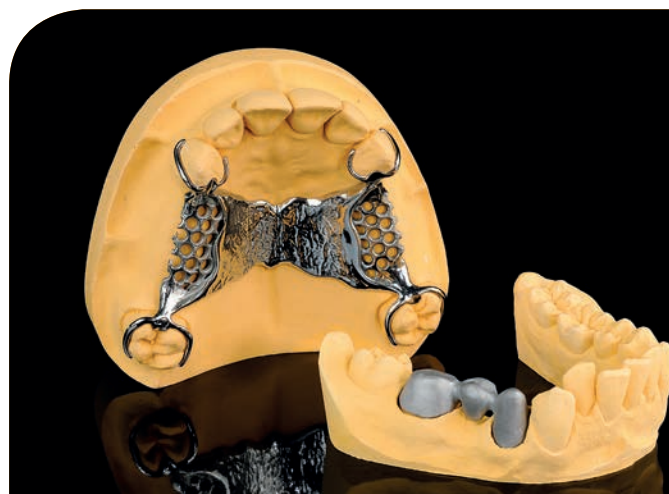
Recommended for: ✓ sectioned models
✓ master models
✓ model casting works
✓ opposing models
✓ static models

Item no.	Unit
101060-10 (ivory)	20 kg
101060-18 (golden brown)	
101061-10 (ivory)	5 kg
101061-18 (golden brown)	

Technical specifications

mixing ratio (p : dw)*	100 : 20
hardness after 2 h (MPa; N/mm ²)	300
hardness after 24 h (MPa; N/mm ²)	320
compressive strength after 1 h (MPa; N/mm ²)	57
compressive strength after 1 h (psi)	8,265
setting expansion after 2 h (%)	0.10
working time (min)	6.0 - 7.0
end of setting (min)	approx. 30

*mixing ratio = powder : distilled water



SHERAPRIMA

Super hard stone type 5

- increased expansion
- balances the shrinking of some impression materials
- for denture repairs

Recommended for: ✓ sectioned models
✓ master models
✓ opposing models
✓ static models

Item no.	Unit
101050-46 (rich yellow)	20 kg
101051-46 (rich yellow)	5 kg

Technical specifications

mixing ratio (p : dw)*	100 : 20
hardness after 2 h (MPa; N/mm ²)	300
hardness after 24 h (MPa; N/mm ²)	320
compressive strength after 1 h (MPa; N/mm ²)	68
compressive strength after 1 h (psi)	9,860
setting expansion after 2 h (%)	0.18
working time (min)	6.0 - 7.0
end of setting (min)	approx. 35



SHERAJIVE

Rapid set super hard stone for creative technicians

- short demould time of 10 minutes
- can be used for various applications
- for urgent denture repairs and relinings

Recommended for: ✓ working models
✓ opposing models
✓ situation models

Item no.	Unit
101135-18 (golden brown)	18 kg (4 x 4.5 kg)
101135-84 (light yellow)	
101133-18 (golden brown)	4.5 kg sachet
101133-84 (light yellow)	

Technical specifications

mixing ratio (p : dw)*	100 : 25
hardness after 2 h (MPa; N/mm ²)	190
hardness after 24 h (MPa; N/mm ²)	210
compressive strength after 1 h (MPa; N/mm ²)	48
compressive strength after 1 h (psi)	6,960
setting expansion after 2 h (%)	0.14
working time (min)	approx. 2.5
end of setting (min)	approx. 10

*mixing ratio = powder : distilled water

Stone for Basing Models



SHERASOCKEL-FLÜSSIG

Super hard stone, liquid

- particular liquid consistency
- flows under arches and pins
- very dense, firm margins
- bubble free bases
- low expansion for stress-free models

Recommended for: ✓ dental arch bases

Item no.	Unit
101110-38 (bright blue)	20 kg
101110-46 (rich yellow)	
101110-62 (terra)	
101110-66 (turquoise)	
101110-70 (white)	
101110-85 (light green)	

Technical specifications	
mixing ratio (p : dw)*	100 : 23
hardness after 2 h (MPa; N/mm ²)	230
hardness after 24 h (MPa; N/mm ²)	250
compressive strength after 1 h (MPa; N/mm ²)	49
compressive strength after 1 h (psi)	7,105
setting expansion after 2 h (%)	0.05
working time (min)	3.5 - 4.5
end of setting (min)	approx. 40

Plasters Type 3

Modelling stones



SHERADYNAMIC

Very fast hard plaster

- ideally suitable for fast repair models
- optimised expansion for denture technique
- investing of models in flasks possible

- good flow characteristics
- smooth and homogeneous surfaces

Technical specifications

mixing ratio (p : dw)*	100 : 30
hardness after 2 h (MPa; N/mm ²)	110
hardness after 24 h (MPa; N/mm ²)	120
compressive strength after 1 h (MPa; N/mm ²)	45
compressive strength after 1 h (psi)	6,525
setting expansion after 2 h (%)	0.15
working time (min)	2.5 - 3.0
end of setting (min)	approx. 10

Item no.	Unit
102120-14 (yellow)	20 kg

Recommended for:

- ✓ working models
- ✓ opposing models
- ✓ situation models

SHERAPLASTER

Hard plaster, superior quality

- for all prosthetic models
- investing of models in flasks possible
- creamy consistency
- very good flow characteristics

- firm margins
- smooth and homogeneous surfaces

Technical specifications

mixing ratio (p : dw)*	100 : 30
hardness after 2 h (MPa; N/mm ²)	120
hardness after 24 h (MPa; N/mm ²)	140
compressive strength after 1 h (MPa; N/mm ²)	46
compressive strength after 1 h (psi)	6,670
setting expansion after 2 h (%)	0.15
working time (min)	4.0 - 5.0
end of setting (min)	approx. 25

Item no.	Unit
102010-14 (yellow)	20 kg
102010-24 (light green)	
102010-26 (light blue)	
102010-70 (white)	

Recommended for:

- ✓ working models
- ✓ opposing models
- ✓ situation models

SHERAALPIN

Hard plaster

- for all prosthetic models
- investing of models in flasks possible
- shortened working time

- very good flow characteristics
- smooth and homogeneous surfaces

Technical specifications

mixing ratio (p : dw)*	100 : 30
hardness after 2 h (MPa; N/mm ²)	100
hardness after 24 h (MPa; N/mm ²)	110
compressive strength after 1 h (MPa; N/mm ²)	44
compressive strength after 1 h (psi)	6,380
setting expansion after 2 h (%)	0.15
working time (min)	3.5 - 4.0
end of setting (min)	approx. 20

Item no.	Unit
102020-14 (yellow)	20 kg
102020-26 (light blue)	
102020-70 (white)	

Recommended for:

- ✓ working models
- ✓ opposing models
- ✓ situation models

*mixing ratio = powder : distilled water

Plasters Type 3 / 2



SHERABIANCO

Hard plaster for orthodontics

- snow-white
- very dense, homogeneous and creamy consistency
- for bubble free models
- very easy to etch

Technical specifications

mixing ratio (p : dw)*	100 : 28
hardness after 2 h (MPa; N/mm ²)	120
hardness after 24 h (MPa; N/mm ²)	140
compressive strength after 1 h (MPa; N/mm ²)	41
compressive strength after 1 h (psi)	5,945
setting expansion after 2 h (%)	0.15
working time (min)	5.0 - 6.0
end of setting (min)	approx. 20

Item no. 102180-58 (snow-white)

Unit 20 kg

Recommended for:

- ✓ situation models
- ✓ static models
- ✓ denture repairs of the prosthetic technique
- ✓ opposing models

SHERAKFO-GIPS

Hard plaster for orthodontics

- dense and homogeneous consistency
- very easy to etch

Technical specifications

mixing ratio (p : dw)*	100 : 30
hardness after 2 h (MPa; N/mm ²)	100
hardness after 24 h (MPa; N/mm ²)	130
compressive strength after 1 h (MPa; N/mm ²)	39
compressive strength after 1 h (psi)	5,655
setting expansion after 2 h (%)	0.15
working time (min)	4.0 - 4.5
end of setting (min)	approx. 25

Item no. 102080-58 (white)

Unit 20 kg

Recommended for:

- ✓ situation models
- ✓ static models
- ✓ denture repairs of the prosthetic technique
- ✓ opposing models

SHERAALABASTER

Plaster type 2

- for investing of partial and full denture
- good flow characteristics
- precise reproduction of all details of the wax models

Technical specifications

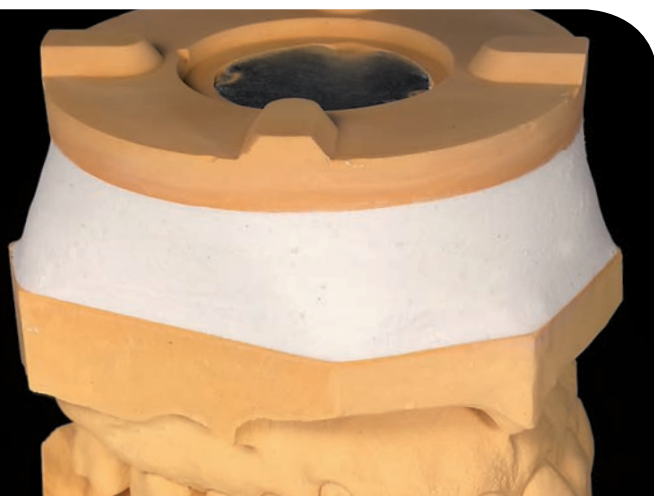
mixing ratio (p : dw)*	100 : 45-50
hardness after 2 h (MPa; N/mm ²)	36
hardness after 24 h (MPa; N/mm ²)	40
compressive strength after 1 h (MPa; N/mm ²)	18
compressive strength after 1 h (psi)	2,610
setting expansion after 2 h (%)	0.18
working time (min)	2.0 - 3.0
end of setting (min)	approx. 20

Item no. 103010-70 (white)

Unit 20 kg

Recommended for:

- ✓ situation models
- ✓ flask technique



SHERAARTI

Articulating plaster

- high adhesive effect
- reduced working time
- extreme low expansion
- excellent stacking properties

Recommended for: ✓ articulating
✓ milling bases
✓ over bites

Item no.	Unit
102040-70 (white)	20 kg

Technical specifications	
mixing ratio (p : dw)*	100 : 30
hardness after 2 h (MPa; N/mm ²)	80
hardness after 24 h (MPa; N/mm ²)	90
compressive strength after 1 h (MPa; N/mm ²)	29
compressive strength after 1 h (psi)	4,205
setting expansion after 2 h (%)	< 0.03
working time (min)	2.0 - 2.5
setting time (min)	approx. 15

*mixing ratio = powder : distilled water

www.shera.de



SHERAADHESO

Articulating plaster with high adhesive strength

- very high adhesive effect
- short working time
- extreme low expansion
- excellent stacking properties

Recommended for: ✓ articulating
✓ milling bases
✓ over bites

Item no.	Unit
102060-70 (white)	20 kg

Technical specifications	
mixing ratio (p : dw)*	100 : 30
hardness after 2 h (MPa; N/mm ²)	80
hardness after 24 h (MPa; N/mm ²)	90
compressive strength after 1 h (MPa; N/mm ²)	29
compressive strength after 1 h (psi)	4,205
setting expansion after 2 h (%)	< 0.03
working time (min)	2.0 - 2.5
setting time (min)	approx. 15

Articulating Plasters



SHERAARTI-QUICK

Fast-setting articulating plaster

- extra-white colour
- very short working time
- extreme low expansion
- very thixotrope

Recommended for: ✓ articulating
✓ milling bases
✓ over bites

Item no.	Unit
102050-70 (white)	20 kg

Technical specifications

mixing ratio (p : dw)*	100 : 30
hardness after 2 h (MPa; N/mm ²)	80
hardness after 24 h (MPa; N/mm ²)	90
compressive strength after 1 h (MPa; N/mm ²)	28
compressive strength after 1 h (psi)	4,060
setting expansion after 2 h (%)	< 0.03
working time (min)	1.0 - 1.5
setting time (min)	approx. 10



SHERAMOUNT

Articulating plaster

- high adhesive effect
- creamy consistency
- excellent stability
- top price-performance ratio

Recommended for: ✓ articulating
✓ milling bases
✓ over bites
✓ cloud-layer technique

Item no.	Unit
102070-70 (white)	20 kg

Technical specifications

mixing ratio (p : dw)*	100 : 40
hardness after 2 h (MPa; N/mm ²)	55
hardness after 24 h (MPa; N/mm ²)	60
compressive strength after 1 h (MPa; N/mm ²)	19
compressive strength after 1 h (psi)	2,755
setting expansion after 2 h (%)	< 0.05
working time (min)	2.0 - 2.5
setting time (min)	approx. 15

*mixing ratio = powder : distilled water



SHERAPOLAN 2 : 1

Model resin based on polyurethane

- ideal for pouring out thin undercut dies
- optimized for CAD/CAM in grey colour
- dimensionally stable and long-lasting
- short setting time
- absolute dimensionally stable margins and resistant to abrasion
- very hard material which is easy to saw, polish and trim

Item no.

516010 (ivory), 516011 (light brown), 516017 (grey)

Unit

set consists of:

300 g component A, 150 g component B, 10 mixing cups,
5 spatulas, 50 ml SHERASEPARAT (separating agent)

Useful. Essential: the SHERA aides



SHERABRILLIANT

Stone / plaster hardener

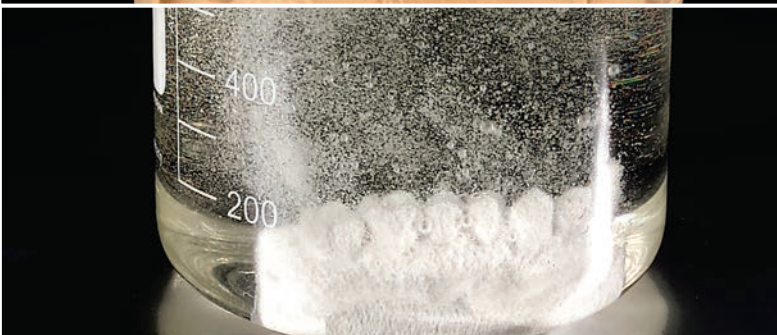
- hardens and seals stone / plaster surfaces
- makes stone / plaster models shine
- for final treatment of stone / plaster models
- water repellent

Item no.

709035

Unit

500 ml



SHERASON 928

Stone / plaster solvent

- removes stone and plaster residues from dentures or spatulas
- can be diluted 1 : 2 with water
- appropriate for ultrasonic bath

Item no.

702080
702081
702088

Unit

1 litre
5 litres
25 litres



SHERAFLOC

Stone / plaster precipitating agent

- bonds particles in the plaster trap
- prevents blocked pipes
- reduces unpleasant odours
- use 10 ml of SHERAFLOC for every 1 litre of water

Item no.

709046

Unit

10 litres

Technical Specifications Stones / Plasters

Modelling stones type 4 + 5

	Special characteristics	Colours
SHERAHARD-ROCK	extreme easy processing	golden brown, golden yellow, light yellow, light green
SHERAMAXIMUM 2000	very good flow characteristics	golden brown, grey, rich yellow, light yellow, white
SHERAMAXIMUM	extreme hardness	yellow, golden brown, grey
SHERAPURE	easily readable	light grey, cream white
SHERAPREMIUM	reduced working time	apricot, ivory, yellow, golden brown, grey, light green, white
SHERAAQUA	creamy consistency	golden brown, pink, white
SHERAFAVORIT	resin-reinforced	ivory, golden brown
SHERAPRIMA	increased expansion, stone type 5	rich yellow
SHERAJIVE	demould time of 10 minutes	golden brown, light yellow

Basing stone / plaster

	Special characteristics	Colours
SHERASOCKEL-FLÜSSIG	liquid consistency	bright blue, rich yellow, terra, turquoise, white, light green

Modelling plasters type 3 + 2

	Special characteristics	Colours
SHERADYNAMIC	for urgent repair models	yellow
SHERAPLASTER	firm margins	yellow, light green, light blue, white
SHERAALPIN	reduced working time	yellow, light blue, white
SHERABIANCO	for snow-white orthodontic works	snow white
SHERAKFO-GIPS	for orthodontic works	white
SHERAALABASTER	for the flask technique	white

Articulating plasters

	Special characteristics	Colours
SHERAARTI	extreme low expansion	white
SHERAADHESO	very high adhesive strength	white
SHERAARTI-QUICK	very short setting time	white
SHERAMOUNT	creamy consistency	white

Mixing ratio (P : dw)*	Hardness after 2 h (MPa; N/mm ²)	Hardness after 24 h (MPa; N/mm ²)	Compressive strength after 1 h (MPa; N/mm ²)	Compressive strength after 1 h (psi)	Setting expansion after 2 h (%)	Working time (min)	End of setting (min)
100 : 20	300	320	70	10,150	< 0.10	5.0 - 6.0	approx. 30
100 : 20	310	340	64	9,280	0.10	6.0 - 7.0	approx. 30
100 : 20	300	320	62	8,990	0.10	6.0 - 7.0	approx. 30
100 : 20	310	330	70	10,150	0.08	6.0 - 7.0	approx. 30
100 : 20	270	290	60	8,700	0.10	4.5 - 5.5	approx. 30
100 : 23	250	270	57	8,265	0.10	4.5 - 5.5	approx. 30
100 : 20	300	320	57	8,265	0.10	6.0 - 7.0	approx. 30
100 : 20	300	320	68	9,860	0.18	6.0 - 7.0	approx. 35
100 : 25	190	210	48	6,960	0.14	approx. 2.5	approx. 10

Mixing ratio (P : dw)*	Hardness after 2 h (MPa; N/mm ²)	Hardness after 24 h (MPa; N/mm ²)	Compressive strength after 1 h (MPa; N/mm ²)	Compressive strength after 1 h (psi)	Setting expansion after 2 h (%)	Working time (min)	End of setting (min)
100 : 23	230	250	49	7,105	0.05	3.5 - 4.5	approx. 40

Mischungs- verhältnis (P : d W)*	Hardness after 2 h (MPa; N/mm ²)	Hardness after 24 h (MPa; N/mm ²)	Compressive strength after 1 h (MPa; N/mm ²)	Compressive strength after 1 h (psi)	Setting expansion after 2 h (%)	Working time (min)	End of setting (min)
100 : 30	110	120	45	6,525	0.15	2.5 - 3.0	approx. 10
100 : 30	120	140	46	6,670	0.15	4.0 - 5.0	approx. 25
100 : 30	100	110	44	6,380	0.15	3.5 - 4.0	approx. 20
100 : 28	120	140	41	5,945	0.15	5.0 - 6.0	approx. 20
100 : 30	100	130	39	5,655	0.15	4.0 - 4.5	approx. 25
100 : 45-50	36	40	18	2,610	0.18	2.0 - 3.0	approx. 20

Mixing ratio (P : dw)*	Hardness after 2 h (MPa; N/mm ²)	Hardness after 24 h (MPa; N/mm ²)	Compressive strength after 1 h (MPa; N/mm ²)	Compressive strength after 1 h (psi)	Setting expansion after 2 h (%)	Working time (min)	Setting time (min)
100 : 30	80	90	29	4,205	< 0.03	2.0 - 2.5	approx. 15
100 : 30	80	90	29	4,205	< 0.03	2.0 - 2.5	approx. 15
100 : 30	80	90	28	4,060	< 0.03	1.0 - 1.5	approx. 10
100 : 40	55	60	19	2,755	< 0.05	2.0 - 2.5	approx. 15

*mixing ratio = powder : distilled water

Impression Material Treatment



IMPRESSION DISINFECTANT

Aldehyde-free, ready for use disinfectant solvent for the dipping technique

- bactericide, yeasticidal, tuberculocidal, virucidal (enveloped viruses)
- drafting of an expert's test according to DGHM directives
- disinfects and cleans surfaces from dental work pieces and moulds
- has an inactivating effect on HBV/HIV and Rotavirus
- suitable for polyether, silicones, alginates and hydrocolloids
- biodegradable
- appropriate for ultrasonic bath

Item no.	Unit
703020	1 litre
703021	5 litres



SHERARELAXA

Impression and surface tension release agent

- for alginate, polyether and silicone impressions
- improves the flow properties of stones and investments
- releases surface tension of waxes
- bubble free models without any residues
- very good wetting properties
- formaldehyde and solvent free
- especially effective and economical in use

Item no.	Unit
709179	50 ml incl. spray nozzle
709175	500 ml



SHERAMASTER

Impression and surface tension release agent

- for silicones, polyether impressions and waxes
- increases the flow characteristics of stones / plasters in impressions
- prevents the formation of bubbles around wax-ups in investments
- alcohol, formaldehyde and solvent free
- neutral odour

Item no.	Unit
709070	1 litre



SHERAISOLEX

Isolating agent – sponge

- isolates stone / plaster against wax
- isolates wax against wax
- isolates alloy against wax
- very thin and homogeneous isolating layer
- simple application

Item no.	Unit
701082	16 ml refill bottle with brush
701087	20 ml can



SHERASEPARAT

Separating agent spray based on wax

- separates stone / plaster against stone / plaster
- separates polyether impressions against model resin
- very thin and homogeneous separating layer
- fast drying
- seals simultaneously

Item no.	Unit
701102	50 ml spray can
701105	300 ml spray can



SHERASEPAL-U

Separating agent spray based on wax

- separates stone / plaster against stone / plaster
- separates polyether impressions against model resin
- seals simultaneously
- thin separating layer

Item no.	Unit
701055	500 ml spray can



SHERASEP-G

Stone / plaster separating agent based on wax and silicone

- separates stone / plaster against stone / plaster
- seals simultaneously
- very thin separating layer
- water repellent

Item no.	Unit
701045	500 ml

Isolating Agents



SHERATEC

Separating agent based on alginate

- colour: clear
- separates stone / plaster against acrylic
- is absorbed completely by the stone / plaster
- very thin separating film
- formaldehyde and silicone free

Item no. 701066

Unit 500 ml

SILICONE SPRAY

Maintenance spray

- for maintenance of articulators, trimmers, vibrators and flasks
- prevents the sticking of stone / plaster
- very economic in use
- for wetting silicones when working in the acrylic technique

Item no. 709165

Unit 400 ml spray can

Adhesives



SHERABOND

Instant adhesive based on cyanoacrylate

- viscosity: 10 - 15 mPas
- exceptional adhesive strength
- very high fluidity
- also suitable for sealing dies
- especially appropriate for acrylics and elastomers

Item no. 958205 958210

Unit 4 g 10 g



SHERAMEGA 2000

Instant adhesive based on cyanoacrylate

- viscosity: 20 - 40 mPas
- excellent adhesive strength
- high fluidity
- patented lid
- anaerobic instant adhesive

Item no. 958120

Unit 20 g



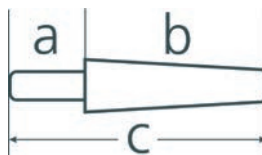
SHERACYANO-C

Instant adhesive based on cyanoacrylate

- viscosity: 90 - 100 mPas
- very high adhesive strength
- also suited for bridging gaps
- especially for the adhesion of metal and acrylic
- top price-performance ratio

Item no. 958310

Unit 10 g



DOWEL PIN

- size 2
- a: 5 mm, b: 17 mm, c: 22 mm

Item no. 942102

Unit 1000 pieces

DOWEL PIN

- with milling
- a: 5 mm, b: 12 mm, c: 17 mm

Item no. 942103

Unit 1000 pieces

DOWEL PIN

- size 2
- with swordfish end for retention
- a: 11 mm, b: 17 mm, c: 28 mm

Item no. 942104

Unit 1000 pieces

BI-PIN

- with small sleeve
- a: 5 mm, b: 14 mm, c: 19 mm
- sleeve c 12 mm

Item no. 942203

Unit 100 pieces

TAPERED PIN

- for DRILL (ø 1.60 mm)
- a: 5 mm, b: 13 mm, c: 18 mm

Item no. 942401

Unit 1000 pieces

METAL SLEEVE

- for TAPERED PIN
- c: 10 mm

Item no. 942402

Unit 1000 pieces

GRADUATED PIN

- with sleeve
- for DRILL (ø 1.60 mm)
- a: 6 mm, b: 12 mm, c: 18 mm
- sleeve c 11 mm

Item no. 942801

Unit 1000 pieces

DRILL

- reinforced with web
- ø 1.60 mm
- for TARPED and GRADUATED PIN
- c: 35 mm
- shaft dimension 3.0 mm

Item no. 942901

Unit 1 piece

Silicones in Cartridges



SHERACRYSTAL

Transparent silicone

- addition cure silicone
- on the basis of polysiloxane
- for working with light cure materials
- for the production of over bites
- suitable for implantological application
- application in mouth only in cured condition
- shore hardness A 70

Item no.	Unit
960201	Set consists of: 2 double cartridges each of 50 ml, 10 mixing nozzles turquoise



SHERAGINGIVAL

Silicone natural appearance

- for gingival masks for model preparation
- addition cure silicone
- special colour with natural appearance
- easy to cut and trim
- for the direct and indirect use
- shore hardness A 70

Item no.	Unit
960101	Set consists of: 2 double cartridges each of 50 ml, 12 mixing nozzles, 50 ml SHERASEPARAT (separating agent)



MILLING BUR for SHERAGINGIVAL

Item no.	960306
Unit	1 piece



MIXING GUN for 2-phase cartridges

Item no.	960301
Unit	1 piece

MIXING NOZZLES

for cartridges of 50 ml

- pink, ø 7 mm, 65 mm long (for S'GINGIVAL)
- yellow, ø 6 mm, 50 mm long (for S'SIL-EXTRA LIGHT)
- blue, ø 5 mm, 45 mm long (for individual application)

Item no.	Unit
960302 (pink)	50 pieces
960303 (yellow)	
960307 (blue)	

INTRA ORAL TIPS

for mixing nozzles in pink

Item no.	960304
Unit	50 pieces

Silicone Putties

Addition cure silicone putties 1 : 1

Addition cure silicone putties from SHERA consist of two components which simply are mixed together with the ratio of 1 : 1. The material

can be mixed easily and homogeneously. You will achieve dimensionally stable results, precise reproduction of details and surfaces.



1 SHERADUETT-SUPERSOFT

Silicone putty

- shore hardness A 50
- especially suitable for undercut dies
- for the preparation of over bites as well as bite registrations and for models for denture repairs
- for isolating teeth against stone when flasking
- very exact moulding, stable to boiling

Item no.	Unit
301550	2 x 1.3 kg
301555	2 x 4 kg

2 SHERADUETT

Silicone putty

- shore hardness A 90
- for the preparation of over bites as well as bite registrations and for models for denture repairs
- for isolating teeth against stone when flasking
- very exact moulding
- dimensional stability

Item no.	Unit
301010	2 x 1.5 kg
301015	2 x 5 kg

3 SHERADUETT-SOFT

Silicone putty

- shore hardness A 85
- for the preparation of over bites as well as bite registrations and for models for denture repairs
- for isolating teeth against stone when flasking
- very exact moulding, stable to boiling
- dimensional stability

Item no.	Unit
301040	2 x 1.5 kg
301045	2 x 5 kg

4 SHERADUETT-HARD

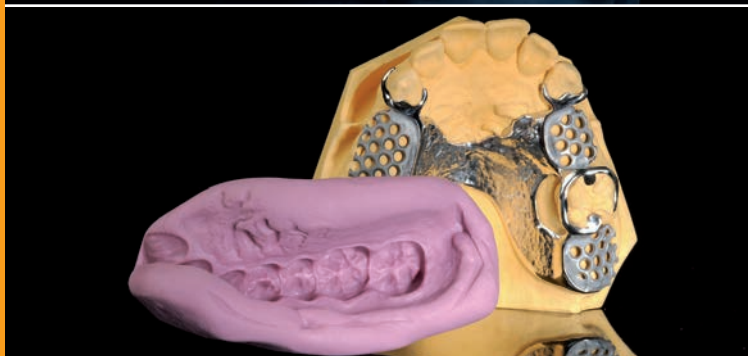
Silicone putty

- shore hardness A 95
- for the preparation of over bites as well as bite registrations and for models for denture repairs
- for isolating teeth against stone when flasking
- very exact moulding, stable to boiling
- dimensional stability

Item no.	Unit
301100	2 x 1.5 kg
301105	2 x 5 kg

Silicone Putties

Addition cure silicone putties 1 : 1



SHERADUPLICA

Silicone putty

- shore hardness A 85
- for the preparation of over bites as well as bite registrations and for models for denture repairs
- for isolating teeth against stone when flasking
- slightly oily
- very exact moulding
- dimensional stability, stable to boiling

Item no.	Unit
301070	2 x 1.5 kg
301071	2 x 3 kg

SHERADUPLICA-HARD

Silicone putty

- shore hardness A 95
- for the preparation of over bites as well as bite registrations and for models for denture repairs
- slightly oily
- very exact moulding
- dimensional stability, stable to boiling

Item no.	Unit
301130	2 x 1.5 kg
301131	2 x 3 kg

Silicones for Intra Oral Usage

Addition cure silicone putties 1 : 1



SHERATWIST 60

Silicone putty

- shore hardness A 60
- silky soft consistency
- area of application in the dental practice**
- impression material for the use in the wash and sandwich technique
- application with correction material SHERASIL-EXTRA LIGHT
- area of application in the dental laboratory**
- for the preparation of over bites and for models for denture repairs
- for isolating teeth against stone when flasking

Item no.	Unit
301500	2 x 500 g
301505	2 x 5 kg

SHERASIL-EXTRA LIGHT

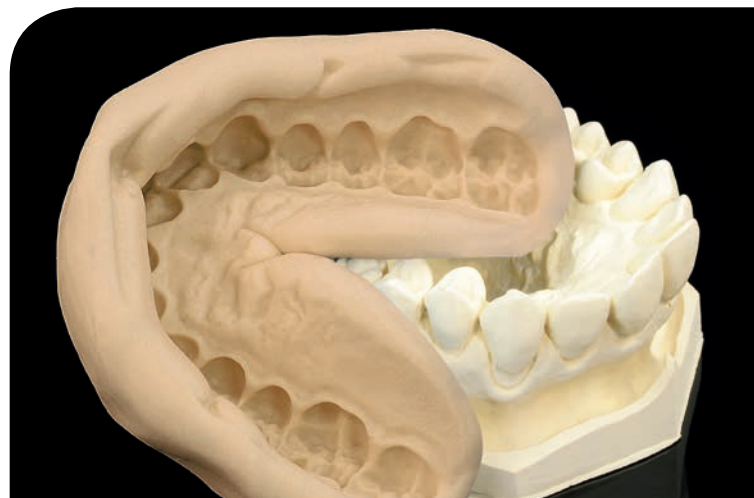
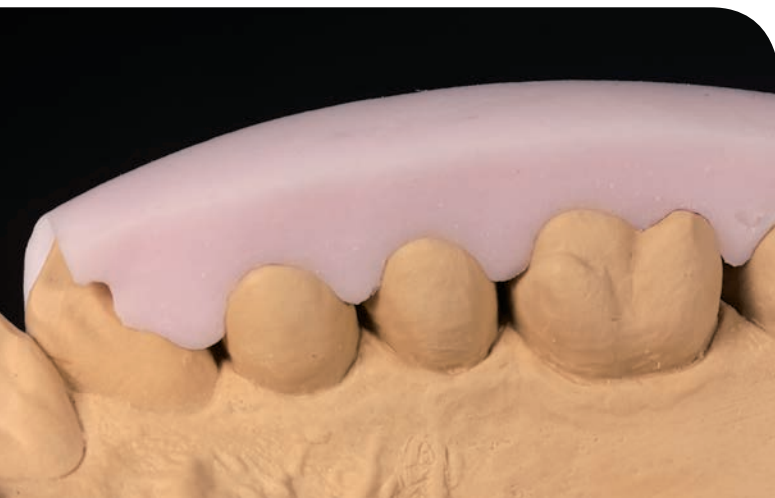
Correction material for SHERATWIST 60

- precise elastomeric mould material
- addition cure silicone putty
- both components can be mixed easily due to cartridge
- liquid consistency
- especially short intraoral setting time
- suitable for sandwich and double mixing technique

Item no.	Unit
302044	2 cartridges each of 50 ml incl. 12 mixing nozzles yellow

Silicone Putties

Condensation cure silicone putties



SHERAEXACT 85

Silicone putty

- shore hardness A 85
- for the preparation of over bites and models for denture repairs
- for isolating teeth against stone when flasking
- soft and non-sticky
- very homogeneous and dense
- highly dimensionally stable
- stable to boiling
- mixes easily with hardener SHERAPASTENHÄRTER

Item no.	Unit
302010	1.3 kg can
302016	10 kg bucket

SHERAEXACT 95

Silicone putty

- shore hardness A 95
- for the preparation of over bites and models for denture repairs
- for isolating teeth against stone when flasking
- soft and non-sticky
- very homogeneous and dense
- highly dimensionally stable
- stable to boiling
- mixes easily with hardener SHERAPASTENHÄRTER

Item no.	Unit
302055	5 kg bucket



SHERAPASTENHÄRTER

Catalyst for SHERA silicone putties

- in plastic tube
- simple to dose

Item no.	Unit
302094	40 ml tube



Casting Technique



Waxes and Others 40



Investments 45



Embedding
Accessories 52



Duplication Systems 54

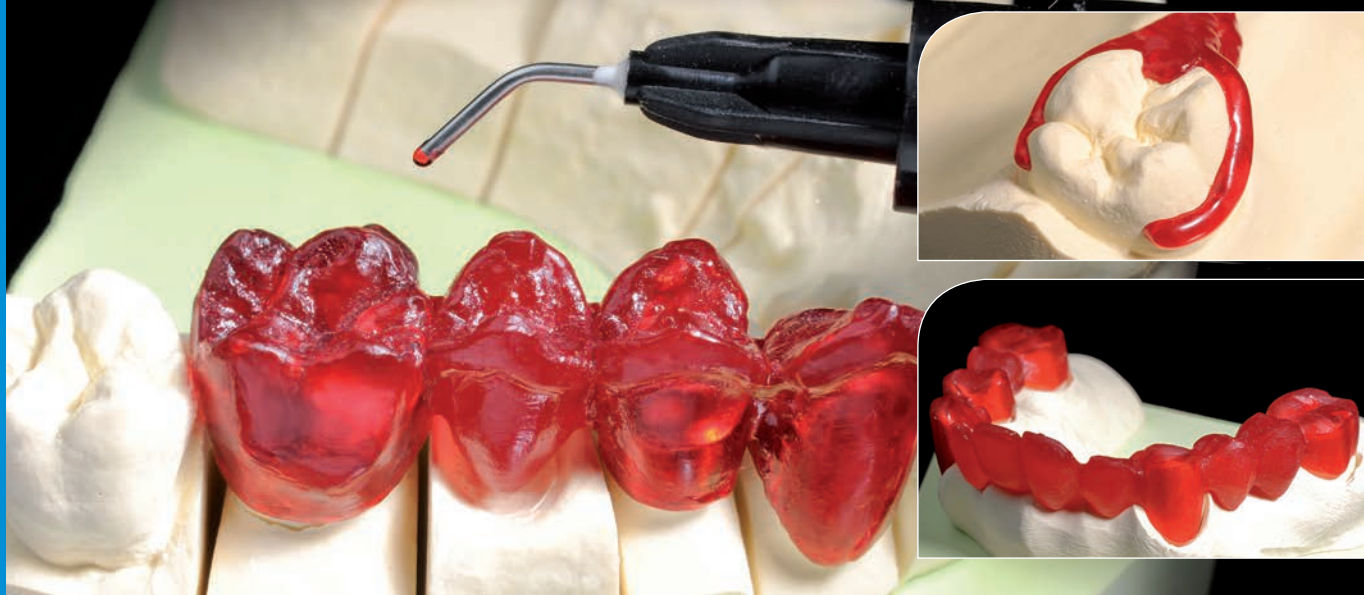


Alloys 59



Soldering Agents 65

Accessories for Modelling

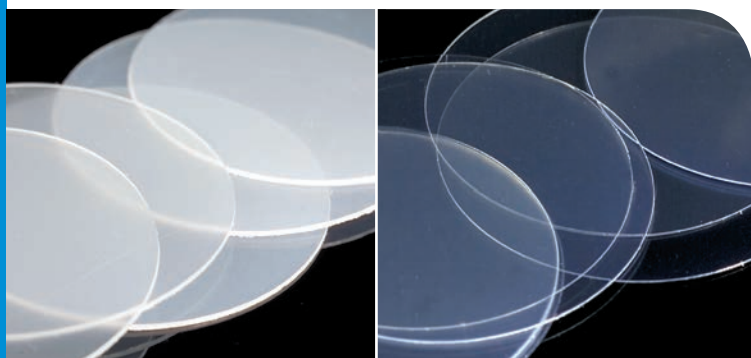


SHERAPLAST

Light-curing modelling resin, ready for use

- for modelling of telescopic and conical crowns, milled elements and attachments, inlays and onlays, modelled castings, individual implant abutments and bars as well as crowns and bridges for the pantographic transfer
- very good fluidity while coupled with high stability
- burns without residues
- colour: red translucent

Item no.	Unit
509010	3 dosing syringes of 3 g incl. 10 intra oral tips



DEEP DRAWING FOILS

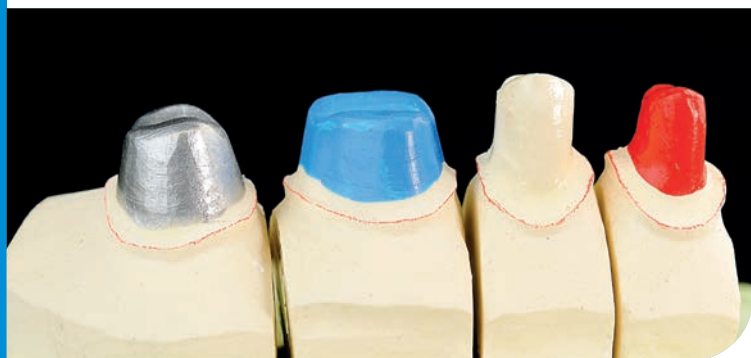
- for the Adapta System
- burns without residues
- ø 42 x 0.6 mm

Item no.	Unit
990104 (hard)	100 pieces
990105 (soft)	

UNDERLAY FOILS

- ø 42 x 0.1 mm

Item no.	Unit
990106	200 pieces



SHERASTUMPFLACK

Die spacer

- serves as spacer between die and crown
- fast drying
- scratch resistant
- the layer of varnish does not soften when in contact with hot water or steam

Item no.	Unit
962101 (blue, 10 µm)	
962201 (clear, 3 µm)	
962301 (red, 8 µm)	
962401 (silver, 13 µm)	
Unit	
16 ml bottle with brush	

THINNER
for SHERASTUMPFLACK

Item no.	Unit
962801	100 ml



AESTHETIC WAX

- ideally suited as a wax up
- for modelling crowns and bridges
- for clean and smooth surfaces
- does not smear
- can be milled
- free of titanium dioxide
therefore burns
- without residues

Item no.	Unit
974115 (white)	45 g can



CERVICAL WAX

- for precisely tailored crown margins
- free of tensions
- very low thermal contraction
- burns without residues

Item no.	Unit
974121 (red)	45 g can



MODELLING WAX

- for perfect modelling
- saves working time
- very good sculpturing features
- short cool-down phase
- very low thermal contraction
- free of plastic particles

Item no.	Unit
974101 (green)	45 g can
974102 (grey)	
974104 (beige)	
974105 (blue)	



CARVING WAX

- carves without flaking
- higher hardness
- for very smooth surfaces
- burns without residues

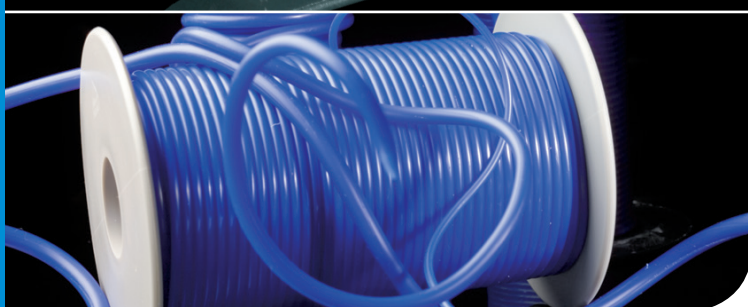
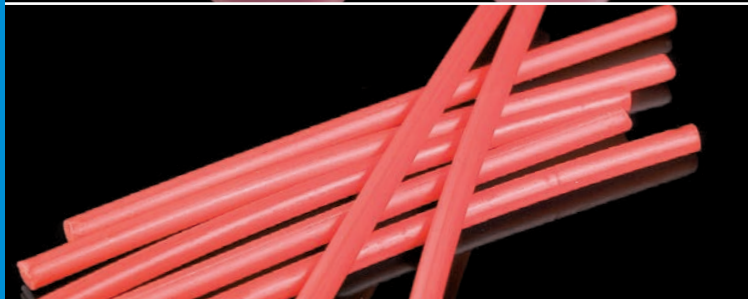
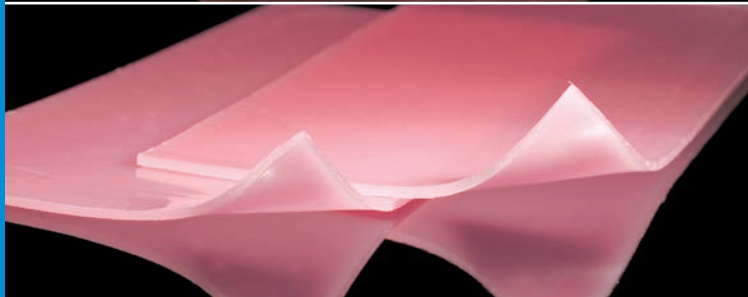
Item no.	Unit
974111 (green)	45 g can



DIP COAT SEALING WAX

- dip coat sealing wax granule
- simple to dose
- elastic, but stable with high modulus
- of resilience
- very easy to carve

Item no.	Unit
974296 (orange)	80 g



SHERAREPRO-WAX

Modelling and injection wax

- suitable for processing with the wax injector and for traditional wax ups with extended plastic phase
- lukewarm easily deformable, without breaking, tearing or splintering
- ideally suited for the production of wax occlusals and wax ups
- accepts facets and contact points very precisely
- for direct fitting control even in the patient's mouth
- suitable for pressable ceramics

Item no.	Unit
974150	1 block of 50 g
974155	10 blocks of 50 g

ADHESIVE WAX

- elastic
- high adhesive strength
- high hardness
- exceedingly ductile
- low shrinkage
- ideally suited as a quick bonder

Item no.	Unit
974293 (red)	4 discs of 7.5 cm ø

PINK SHEET WAX

- top quality
- multi-purpose wax
- exceptionally elastic
- excellence in modelling
- low contraction
- opaque colour for optimal control

Item no.	Unit
974294	2.5 kg

WAX STICKS

- ø 4.0 mm round
- hard
- stable and distortion-free connections
- very secure when lifting wax patterns

Item no.	Unit
974914 (red)	250 g

SHERACASTINGSTICKS

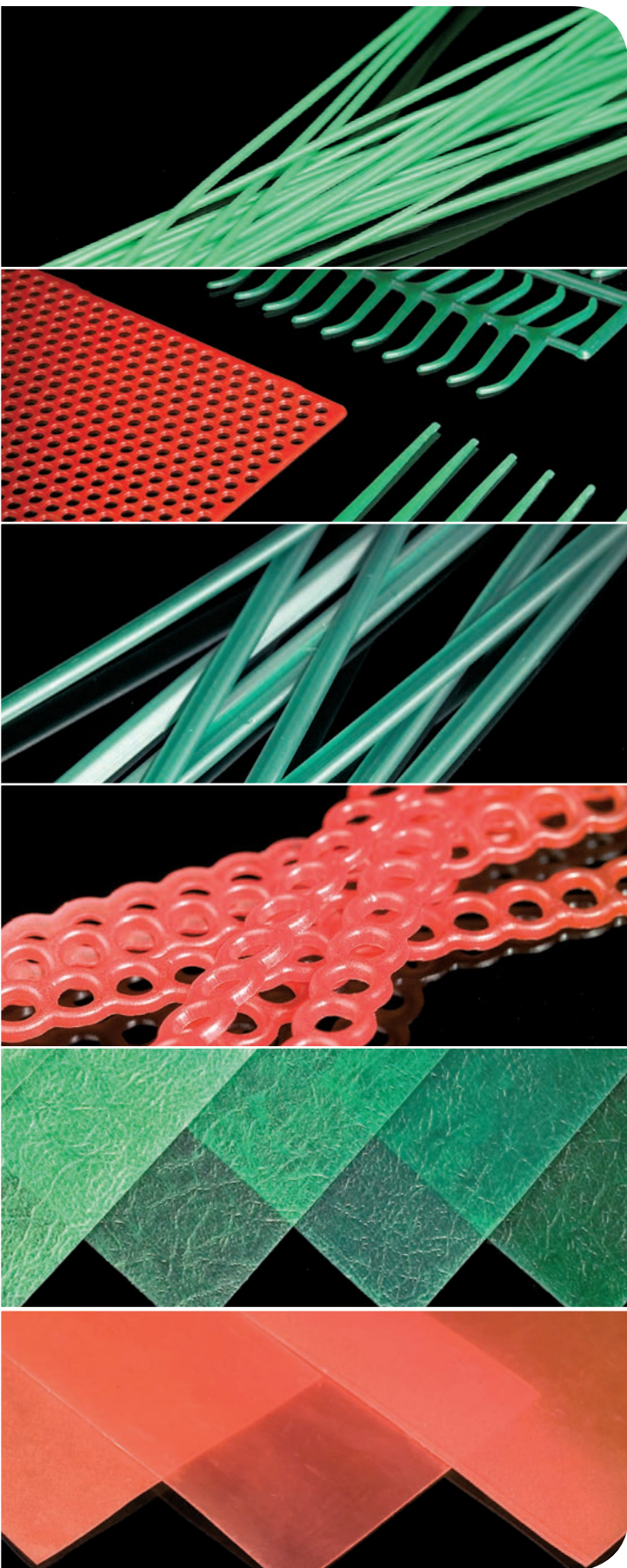
- wax casting sticks with „reservoir“
- for a homogeneous casting structure without porosities
- simple treating of the casting by flooding with the casting stick
- ideally suited for vacuum pressure casting
- easy separation after casting
- enlarged trunking cross for non-precious alloys

Item no.	Unit
974917 (ø 7.0 mm)	100 pieces
974918 (ø 8.0 mm)	
974919 (ø 9.0 mm)	

WAX WIRE

- medium hardness
- dimensionally stable while mouldable at the same time

Item no.	Unit
974902 (2.5 mm)	1 roll (250 g)
974903 (3.0 mm)	
974901 (3.5 mm)	
974904 (4.0 mm)	



PROFIL BARS ROUND

- ø 1.0 mm
- medium hardness

Item no.	Unit
974921 (emerald green)	38 g

WAX PATTERNS

- simple to adapt
- dimensionally stable while mouldable at the same time

Item no.	Unit
974222	molar clasps, 10 sheets
974225	round grid retentions, 20 sheets
974226	ring clasps straight, 10 sheets

LOWER JAW BARS

- simple to adapt
- dimensionally stable while mouldable at the same time
- 2 x 4 x 145 mm

Item no.	Unit
974291	65 g

HOLE RETENTION BARS

- simple to adapt
- dimensionally stable while mouldable at the same time

Item no.	Unit
974292	25 bars

CASTING WAX COARSE-VEINED

- for model casting
- high quality ductile
- simple to adapt
- does not stretch while moulding

Item no.	Unit
974213 (0.4 mm)	15 sheets
974214 (0.5 mm)	
974215 (0.6 mm)	

PREPARATION WAX

- for model casting
- elastic quality
- simple to adapt
- dimensionally stable while mouldable
- at the same time

Item no.	Unit
974201 (0.5 mm)	15 sheets
974202 (0.6 mm)	
974203 (0.7 mm)	



Investments

SHERA offers an extensive range of highly technical products to meet the demands of precision investment casting. The technical characteristics of these high tech products convince.

SHERA investments are:

- especially fine grained and thus have extremely good flow characteristics
- precise in detail, as the creamy mass flows into even the finest of detail
- permeable for degassing
- very easy to control in order to achieve an exact expansion
- optimal in order to bind a maximum of oxides
- a guarantor for precise casting results with a very high surface quality.

All SHERA investments are as suitable for shock heat and for the traditional slow heating process. For chrome casting as well as for crown and bridge technique up to alloys with a high gold content or non-precious metals: SHERA has the appropriate investment for each technique.





Be enthusiastic about the precision of **SHERAFINA® 2000**

Start your precision casting with ardent zeal and rely on SHERAFINA® 2000. Using this high-tech investment you have full control with expansion giving extremely smooth surfaces. SHERAFINA® 2000 will enable you to

achieve perfect fitting results in every case - from a large bridge construction to a crown. Just trust in SHERA investments as we have an intensive care about dental casting.



SHERAFINA® 2000

Investment for crown and bridge techniques

- premium quality for gold, gold telescopics, non-precious alloys and pressable ceramics
- very fine with a dense consistency for castings, the expansion is easy to control with results having a very smooth surface and exceptional precise fit
- used for shock heat process and the traditional slow heating process

Item no.	Unit
201010	3 kg (50 sachets of 60 g)
201011	6 kg (60 sachets of 100 g)
201012	6 kg (38 sachets of 160 g)



SHERAFINA®-RAPID

Investment for crown and bridge technique

- suitable for all high gold up to non-precious alloys
- expansion is easy to control
- for shock heat process and for the traditional slow heating process
- very fine and dense consistency
- for castings with very smooth surfaces
- for an exceptional precise fit

Item no.	Unit
201020	3 kg (50 sachets of 60 g)
201022	6 kg (38 sachets of 160 g)

TIP



Do not forget the expansion liquid! SHERALIQUID is presented on page 51.



SHERAMAGIC-GREEN

Special speed investment for non-precious alloys

- for crown and bridge technique
- for shock heat process and for the traditional slow heating process
- the colour change indicates the right time for placing the muffle into the furnace
- shortened setting time of approx. 10 minutes
- very easy devesting and sandblasting
- very suitable for milled wax and acrylic parts

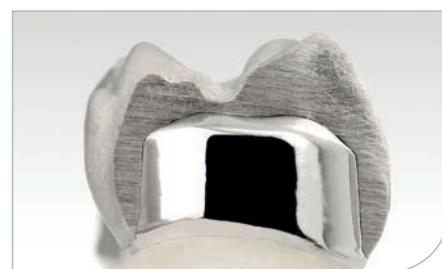
Item no.	Unit
201042	4.5 kg (25 sachets of 180 g)



Investment for telescopic crown technique

You are looking for perfect fitting telescopic crowns? This is easy to achieve with SHERAFRIXION. The expansion is considerably higher, exact to control and perfectly adapted to the requirements of the telescopic and conical crown

technique. Whether you use gold or non-precious alloys, even for single crowns as well as for bridges with this new investment the friction between the primer and the second part can ideally be created.



SHERAFRIXION

- for telescopic crown and implant technique, for all kind of alloys
- for crown and bridge technique, for all non-precious alloys
- for shock heat process and for the traditional slow heating process
- for modellations of wax, self curing or light curing modelling resin (e.g. SHERAPLAST)

Item no.	Unit
201052	4.5 kg (25 sachets of 180 g)



SHERAVEST RP

Investment for rapid prototyping

- phosphate bonded
- for three-dimensional printed plastic models
- for casting almost all kind of alloys
- very precise casting result
- maximum bonding of arising oxide

Item no.	Unit
202095	10 kg (4 sachets of 2.5 kg)



TIP



Use SHERAMUFFELFORMER made of cellular rubber. They provide an „optimal climate“ inside the muffle thus reducing the risk of fissures and chippings. You find them on page 52.

SHERATITAN-EASY

Investment for pure titanium and titanium containing alloys

- for shock heat process and for the traditional slow heating process
- reduces the formation of an alpha case layer on the cast object
- oxides largely remain bonded in the investment
- expansion can easily be controlled by the liquid
- can be cast without casting ring
- very fine and dense consistency
- for castings with very smooth surfaces
- for an exceptional precise fit

Item no.	Unit
209013	1.6 kg can



SHERACAST 2000

Chrome investment

- premium quality
- fine quality, creamy consistency
- for shock heat process and for the traditional slow heating process
- for silicone duplication
- for chrome castings with a very precise fit
- for extremely smooth surfaces
- for very stable margins
- binds the oxides

Item no.	Unit
202010	10 kg (50 sachets of 200 g)
202011	20 kg (50 sachets of 400 g)
202015	20 kg (8 sachets of 2.5 kg)



SHERACAST

Robust chrome investment

- robust quality
- for shock heat process and for the traditional slow heating process
- for silicone and gel duplication
- for chrome castings with a very precise fit
- for extremely smooth surfaces
- for very stable margins
- the oxides will be bonded when devesting shock heat process
- binds the oxides

Item no.	Unit
202020	10 kg (50 sachets of 200 g)
202021	20 kg (50 sachets of 400 g)
202025	20 kg (8 sachets of 2.5 kg)

Expansion Liquids



SHERALIKUID

Mixing liquid

- special expansion liquid for all SHERA investments
- can be mixed with distilled water according to the recommendations given for the investment used
- sensitive to cold

Item no.	Unit
208010	1 litre
208011	5 litres

SHERALIKUID EXTRA

Mixing liquid

- special expansion liquid
- for any kind of work requiring a greater expansion
- use only in conjunction with SHERALIKUID
- sensitive to cold

Item no.	Unit
208020	1 litre

TIP



INFORMATION ABOUT MIXING RATIOS ONLINE

Which mixing ratio leads to the best results? On our homepage www.shera.de you find the requested information of SHERA investments. For further questions please direct your inquiry to our application technicians. They are pleased to assist you.



SHERALIKUID WINTER STOCKS

Remember to build up winter stocks of SHERALIKUID in due time. The liquid is sensitive to cold and cannot be delivered at temperatures of less than +5°C.

Mould Formers

For each casting we have developed the suitable mould former made of cellular rubber. The elasticity of this material allows the investment to expand freely. The inside walls of the formers are ribbed, this imparts a surface on the mould which can

more easily degas in the furnace and hence prevent cracking. Moreover, the mould surrounding of one centimetre thickness provides an optimal climate and only thus makes highest precision possible.



SHERAMUFFEL-FORMER K&B

for crown and bridge technique

- reusable multiple times
- facilitates the expansion of the investment

Item no.	Unit
926101 (3x mould)	1 piece
926102 (6x mould)	
926103 (9x mould)	

SHERAMUFFEL-FORMER RP

for rapid prototyping

- for investing three-dimensional printed models
- reusable multiple times
- facilitates the expansion of the investment

Item no.	Unit
926125	1 piece

SHERAMUFFEL-FORMER MG

for chrome technique

- reusable multiple times
- facilitates the expansion of the investment

Item no.	Unit
926105	1 piece

TIP



The white casting ring liner provides an improved visual effect for the inside of the muffle as this brighter background gives a better contrast to the wax-up – more control while investing.



SHERABIO-MUFFELVLIES

Bio casting ring liner

- 50 x 1 mm
- 25 metres per roll
- protects the muffles made of cellular rubber against abrasion
- enables an increased porosity of silicone muffles
- well-tolerated AES wool
- extra thick and soft
- yields to expansion

Item no.	Unit
926211	1 roll

SHERAPORAL

Solvent free dipping hardener

- hardens and seals investment models
- very low viscosity
- it soaks very easily into the model's surface
- to be used without thinner

Item no.	Unit
926401	1 litre
926402	5 litres



SHERAPOR-L

Dipping hardener

- hardens and seals investment models
- wax patterns will adhere better
- very low viscosity
- it soaks very easily into the model's surface

Item no.	Unit
926301	500 ml
926302	5 litres



THINNER

for SHERAPOR-L

Item no.	Unit
926303	500 ml



SHERAMODELLHAFTGRUND

Model adhesive

- clear
- improves the adhesion of wax to the surface of investment models

Item no.	Unit
709132	30 ml bottle with brush

Silicone Duplicating Materials

The addition cure duplicating silicones of the DUOSIL range of SHERA distinguish themselves by a high tear-resistance and outstanding recovery of the material. The silicone moulds of

DUOSIL can reliably be poured out several times. These bottles are compatible with many commercial silicone dispensing devices. However, we recommend dosing the silicones by hand.

DUOSIL S

Shore hardness A 9

- colour: royal blue
- very soft and elastic
- setting time: 20 minutes
- especially suitable for thin dies

Item no.	Unit
321140	2 x 1 kg

DUOSIL H

Shore hardness A 17

- colour: blue
- soft and elastic
- setting time: 20 minutes
- even for models with undercut thin dies
- yields to the expansion of the investment

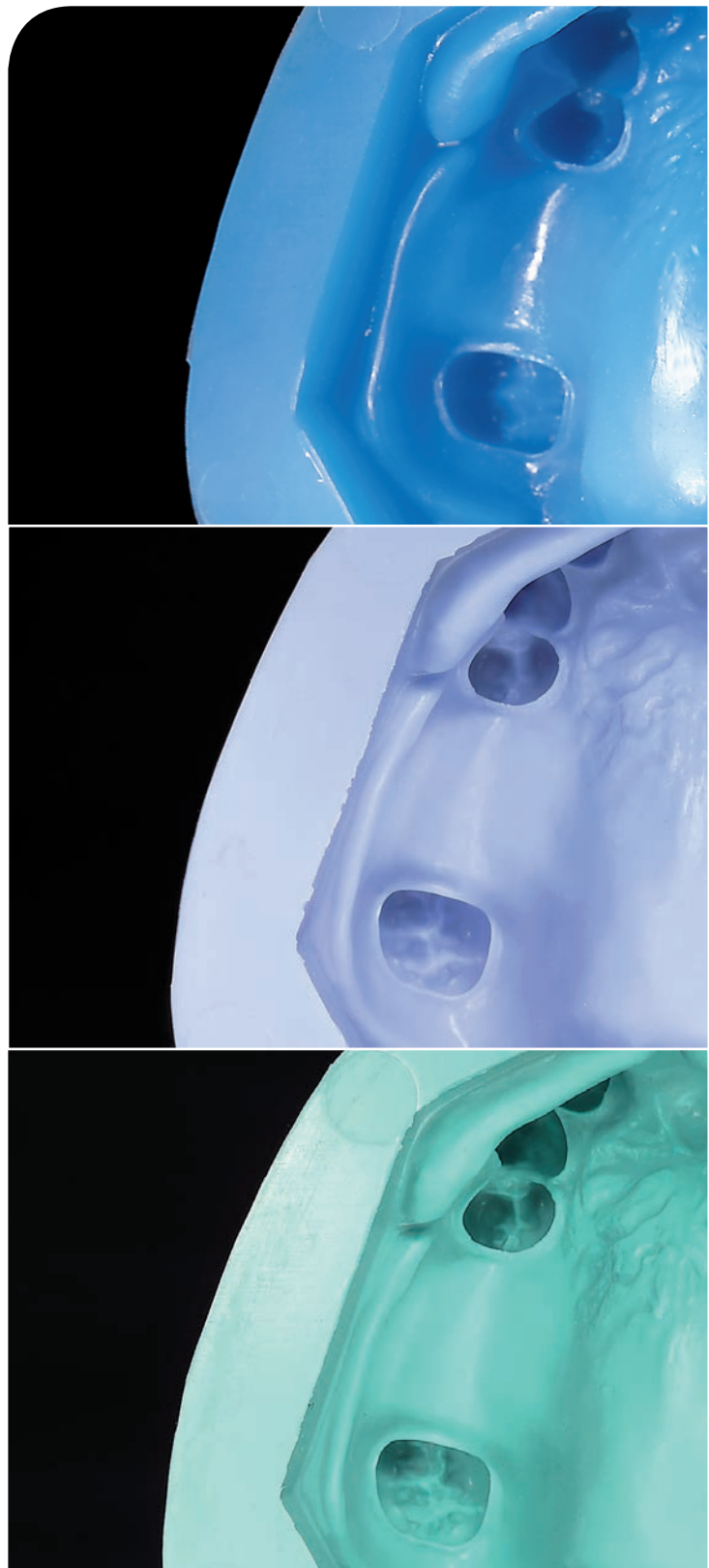
Item no.	Unit
321040	2 x 1 kg
321041	2 x 5 kg

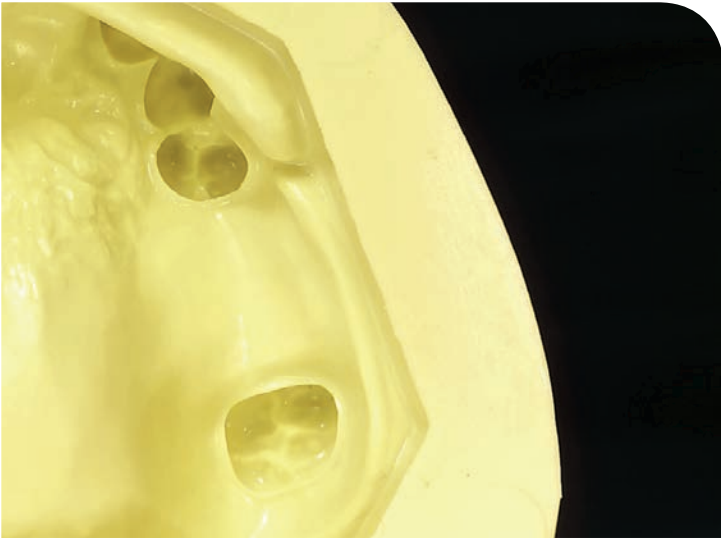
DUOSIL D

Shore hardness A 22

- colour: turquoise
- medium hardness
- setting time: 20 minutes
- for a quick recovery
- even suited to dies for the galvano technique

Item no.	Unit
321010	2 x 1 kg
321011	2 x 5 kg



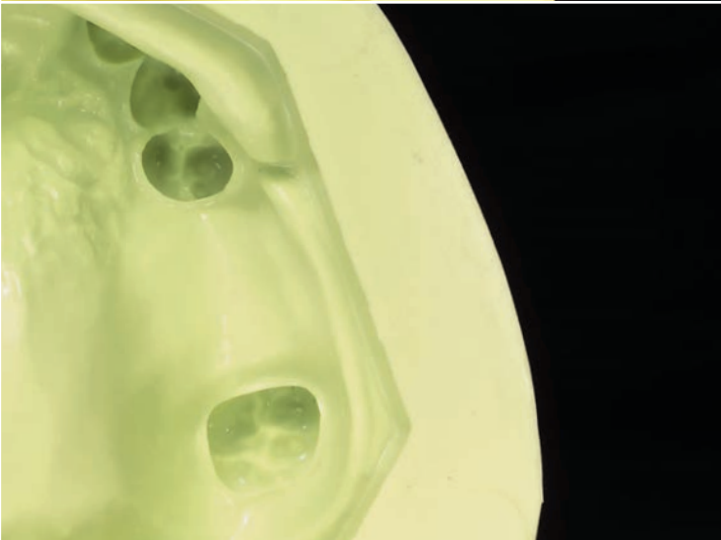


DUOSIL EXPRESS

Shore hardness A 22

- colour: yellow
- medium hardness
- shortened setting time: 9 minutes
- due to the shortened reaction time it is essential to mix by hand
- enables fast working
- for stones and investments

Item no.	Unit
321100	2 x 1 kg
321101	2 x 5 kg



DUOSIL EXTRA HART

Shore hardness A 32

- colour: lime green
- great hardness
- setting time: 20 minutes
- especially suitable for the acrylic technique
- slightly oily
- very fast recovery

Item no.	Unit
321070	2 x 1 kg
321071	2 x 5 kg



DUPLICATING FLASK

- suitable for silicone and gel technique
- anchorage due to tapered sleeve part

Item no.	Unit
922120	1 piece (four-piece)

Duplicating Gels

SHERA duplicating gels distinguish themselves by an exact duplication. They can be heated conventionally or in a microwave, are reusable and biodegradable. Their varied elasticity makes them suitable for different applications in the laboratory.

SHERAHYDROKOL

Special duplicating gel for stone / plaster models

- colour: beige
- firm duplicating material
- fast and economical

Item no.	Unit
322040	6 kg bucket



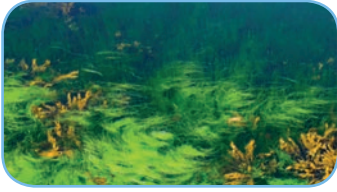
SHERAGEL

Duplicating gel for acrylic casting technique

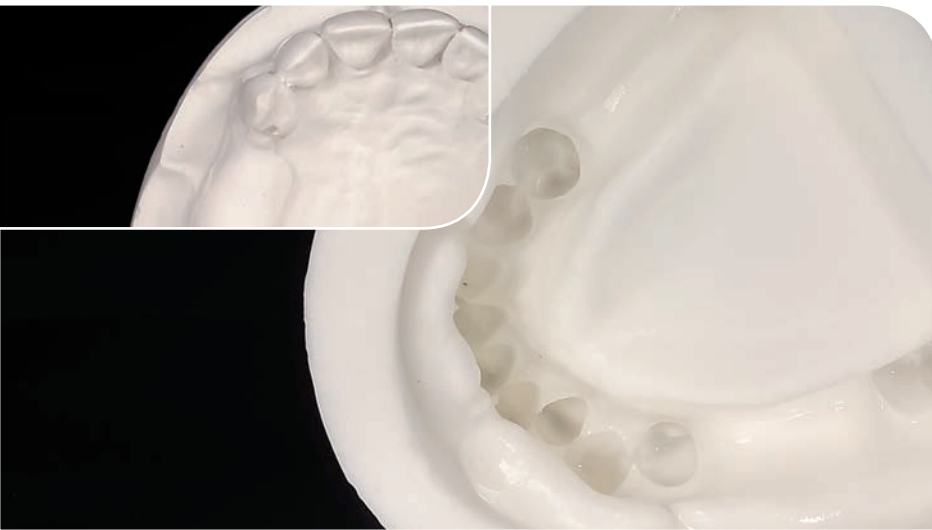
- colour: red
- for acrylic casting technique in the complete denture prosthetics
- strong duplicating gel
- for chrome cobalt models and prosthetics

Item no.	Unit
322020	6 kg bucket

Agar-Agar instead of silicone: Take care of the environment and save money



Duplicating gels are an environmentally friendly alternative to silicones. Agar-Agar is a renewable raw material. The duplicating materials based on alga extracts have a long life span, are of multiple use and biodegradable. Using this duplicating gels you protect the environment and save money in one step!



SHERAFORM

Duplicating gel for cobalt chrome models

- colour: white
- extremely strong duplicating material
- for very smooth and dense surfaces similar to those of silicone moulds
- excellent elastic recovery
- very tear-resistant
- long working life

Item no.	Unit
322030	6 kg bucket

SHERADUBLE

Duplicating gel for cobalt chrome models

- colour: green
- elastic duplicating gel
- excellent price-performance ratio

Item no.	Unit
322010	6 kg bucket





Alloys

SHERA alloys are high-quality alloys with ideal technical properties. They are melting homogeneously with an excellent capability of flow and are very easy to work on. The excellent surface quality guarantees an exquisite gloss. According to DIN EN ISO 22674 all SHERA alloys are free of beryllium as well as cadmium. All cobalt chrome alloys are also free of nickel. SHERA alloys distinguish themselves by highest purity. As a CE marked medical device they are subject to permanent control and stringent quality requirements.

Crown and Bridge Alloys

Cobalt chrome alloys

SHERA crown and bridge alloys bond very well with ceramics, are suitable for laser welding and distinguish themselves by their low hardness.



SHERADENT

Non-precious bonding alloy top quality

- very high value cobalt chrome alloy
- long approved quality
- coefficient of expansion: $14.6 \times 10^{-6} \text{ K}^{-1}$
- suitable for laser welding

Item no.	Unit
402020	100 g
402021	250 g
402023	1000 g

Technical specifications

vickers hardness (HV 10)	286
density (g/cm^3)	8.8
tensile strength (N/mm^2)	734
0.2-yield strength (N/mm^2)	570
elongation limit A_5 (%)	10
modulus of elasticity (N/mm^2)	194,000
liquidus point ($^{\circ}\text{C}$)	1,417
solidus point ($^{\circ}\text{C}$)	1,309
casting temperature ($^{\circ}\text{C}$)	1,520
coefficient of expansion (25-600 $^{\circ}\text{C}$)	$14.6 \times 10^{-6} \text{ K}^{-1}$

Composition in %

chrome	21
cobalt	64
molybdenum	6
tungsten	6
further elements below 1 %	Fe, Mn, Si

SHERAALLOY-NP

Non-precious bonding alloy

- high value cobalt chrome alloy
- very good price-performance ratio
- coefficient of expansion: $14.0 \times 10^{-6} \text{ K}^{-1}$
- suitable for laser welding

Item no.	Unit
402140	100 g
402141	250 g
402143	1000 g

Technical specifications

vickers hardness (HV 10)	280
density (g/cm^3)	8.3
0.2-yield strength (N/mm^2)	550
elongation limit A_5 (%)	10.1
modulus of elasticity (N/mm^2)	210,000
liquidus point ($^{\circ}\text{C}$)	1,370
solidus point ($^{\circ}\text{C}$)	1,310
casting temperature ($^{\circ}\text{C}$)	1,430
coefficient of expansion (25-600 $^{\circ}\text{C}$)	$14.0 \times 10^{-6} \text{ K}^{-1}$

Composition in %

chrome	24
cobalt	63
tungsten	8.1
molybdenum	2.9
silicon	1.1
further elements below 1 %	Nb



SHERAALEOS

Non-precious bonding alloy

- high value cobalt chrome alloy
- coefficient of expansion: $14.1 \times 10^{-6} \text{ K}^{-1}$
- suitable for laser welding

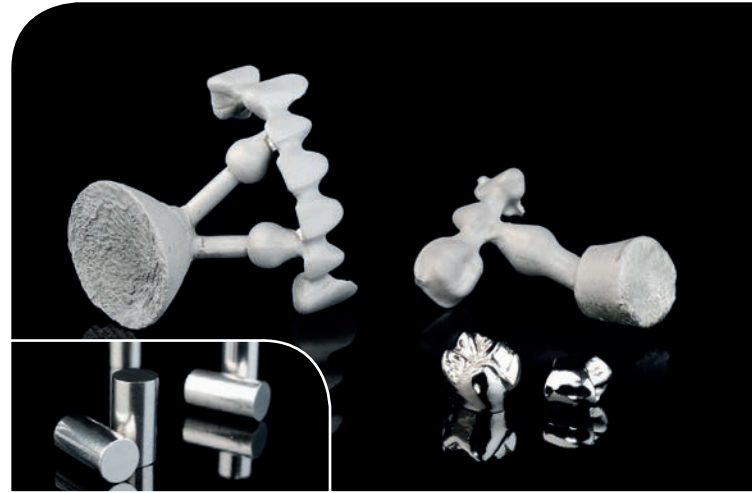
Item no.	Unit
402050	100 g
402051	250 g
402053	1000 g

Technical specifications

vickers hardness (HV 10)	285
density (g/cm^3)	8.3
tensile strength (N/mm^2)	845
0.2-yield strength (N/mm^2)	620
elongation limit A_5 (%)	10
modulus of elasticity (N/mm^2)	190,000
liquidus point ($^{\circ}\text{C}$)	1,415
solidus point ($^{\circ}\text{C}$)	1,390
casting temperature ($^{\circ}\text{C}$)	1,475
coefficient of expansion (25-600 $^{\circ}\text{C}$)	$14.1 \times 10^{-6} \text{ K}^{-1}$

Composition in %

chrome	28
cobalt	61
tungsten	8.5
silicon	1.7
further elements below 1 %	Fe, Mn, C



SHERAALLOY-NI

Nickel chrome bonding alloy

- highest fitting accuracy with low hardness
- very good price-performance ratio
- coefficient of expansion: $14.1 \times 10^{-6} \text{ K}^{-1}$
- suitable for laser welding

Item no.	Unit
402133	1000 g

Technical specifications

vickers hardness (HV 10)	180
density (g/cm^3)	8.2
0.2-yield strength (N/mm^2)	345
elongation limit A_5 (%)	25
modulus of elasticity (N/mm^2)	200,000
liquidus point ($^{\circ}\text{C}$)	1,330
solidus point ($^{\circ}\text{C}$)	1,250
casting temperature ($^{\circ}\text{C}$)	1,390
coefficient of expansion (25-600 $^{\circ}\text{C}$)	$14.1 \times 10^{-6} \text{ K}^{-1}$

Composition in %

chrome	24.5
nickel	62.7
molybdenum	10.4
silicon	1.4
iron	1.0
further elements below 1 %	-

Model Casting Alloys

The model casting alloys of SHERA are all-purpose alloys. The programme includes alloys with extreme spring stiffness as well as especially elastic alloys.



SHERALIT-IMPERIAL

Continuous casting

- proven top quality
- for removable partial and combination dentures
- suitable for laser welding

Item no.	Unit
401013	1000 g

Technical specifications

vickers hardness (HV 1)	350
density (g/cm ³)	8.3
tensile strength (N/mm ²)	669
0.2-yield strength (N/mm ²)	379
elongation limit A ₅ (%)	12
modulus of elasticity (N/mm ²)	222,000
liquidus point (°C)	1,406
solidus point (°C)	1,338
casting temperature (°C)	1,560

Composition in %

chrome	28
cobalt	64
molybdenum	6.0
further elements below 1 %	C, Fe, Mn, Si, Nb



SHERALIT-ELASTIC

Continuous casting

- exceptional elasticity
- ideal for removable partial dentures
- suitable for laser welding

Item no.	Unit
401023	1000 g

Technical specifications

vickers hardness (HV 1)	335
density (g/cm ³)	8.3
tensile strength (N/mm ²)	718
0.2-yield strength (N/mm ²)	368
elongation limit A ₅ (%)	12
modulus of elasticity (N/mm ²)	207,000
liquidus point (°C)	1,413
solidus point (°C)	1,320
casting temperature (°C)	1,550

Composition in %

chrome	28
cobalt	64
molybdenum	6.0
further elements below 1 %	C, Fe, Mn, Nb, Si



SHERALIT-CYLINDRA

Continuous casting

- universal alloy
- favourable price-performance ratio
- suitable for laser welding

Item no.	Unit
401043	1000 g

Technical specifications	
vickers hardness (HV 1)	549
density (g/cm ³)	8.3
tensile strength (N/mm ²)	675
0.2-yield strength (N/mm ²)	441
elongation limit A ₅ (%)	9.3
modulus of elasticity (N/mm ²)	197,000
liquidus point (°C)	1,400
solidus point (°C)	1,350
casting temperature (°C)	1,600

Composition in %	
chrome	29
cobalt	63
molybdenum	6
further elements below 1 %	C, Fe, Si, Mn



SHERANAXOS

Continuous casting

- optimal for combination dentures
- slightly increased elasticity
- suitable for laser welding

Item no.	Unit
401063	1000 g

Technical specifications	
vickers hardness (HV 10)	390
density (g/cm ³)	8.3
tensile strength (N/mm ²)	761
0.2-yield strength (N/mm ²)	609
elongation limit A ₅ (%)	6.2
modulus of elasticity (N/mm ²)	200,000
liquidus point (°C)	1,400
solidus point (°C)	1,340
casting temperature (°C)	1,450

Composition in %	
chrome	31
cobalt	62
molybdenum	5
further elements below 1 %	C, Fe, Mn, Si

Preparation for Ceramic Works

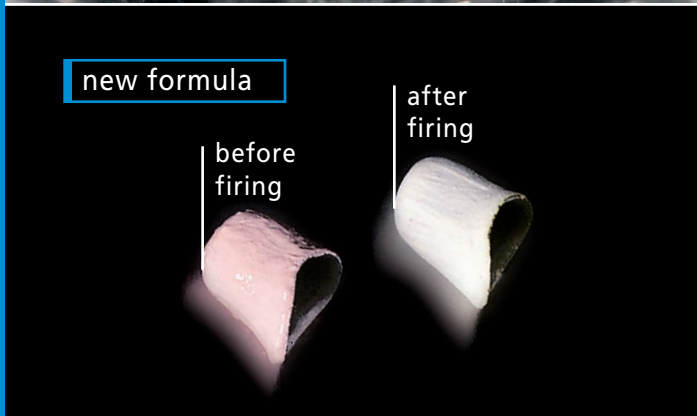


FRAME CLEANER

Ready for use liquid for cleaning and degreasing

- for sandblasting chromes before firing
- intensive effect
- prevents the formation of bubbles in the ceramic

Item no.	Unit
702205	500 ml



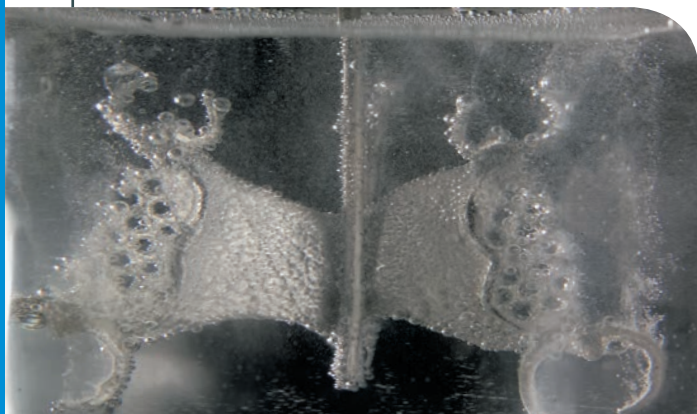
CERAMIC BONDER

Universal bonding agent

- optimizes the bonding of ceramic
- compensates the different coefficient of expansion for metal and ceramic
- neutralises colouring metal oxides
- forms a perfect base for aesthetic veneers

Item no.	Unit
990115	4 g syringe

Polishing

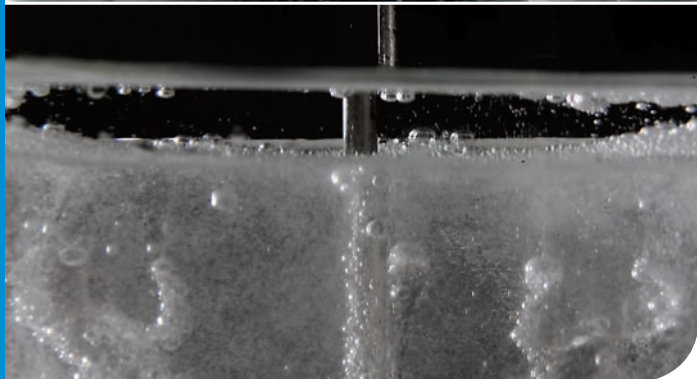


SHERADAN

Polishing electrolyte

- for brilliant shiny metal surfaces
- quick acting

Item no.	Unit
709050	1 litre



SHERADECALON

Covering liquid for acids and polishing electrolytes

- stops the emission of acid vapours and odours
- prevents the atmospheric humidity from getting into the hygroscopic electrolyte
- lengthens life span of the electrolyte
- very economical

Item no.	Unit
709064	250 ml

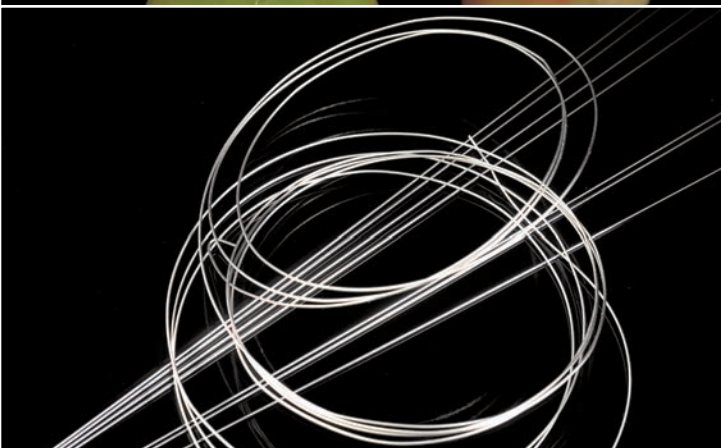


HEAT SHIELDING AND ISOLATING PASTE

Heat protection and isolating paste

- asbestos free
- protects all acrylics, ceramics and metals against damage caused by heat while soldering
- can be applied easily and selectively
- odourless
- does not generate any fumes
- can be rinsed off without residue

Item no.	Unit
934231	235 g tube



LASER WELDING WIRES

Welding wire

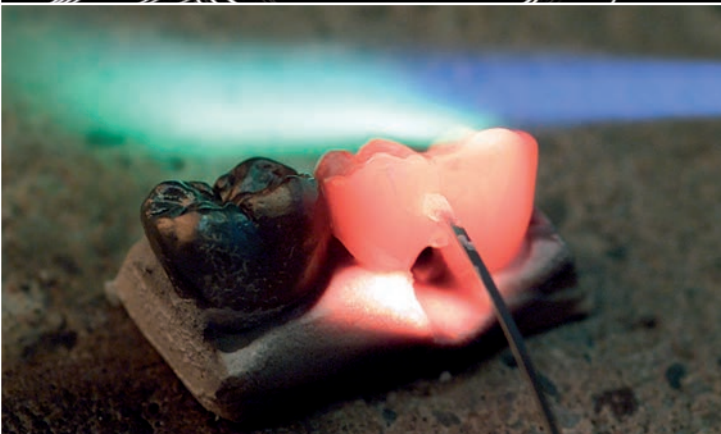
- for all non-precious alloys
- for chrome casting alloys
- can be fused

Item no. Unit

934301	7 bars of 25 cm (ø 0.5 mm)
934311	2 metre roll (ø 0.35 mm)
934321	2 metre roll (ø 0.5 mm)

Composition in %

chrome	28
cobalt	65.3
molybdenum	5.5
other	Si, Mn



SHERALOT-N

Solder bar

- for all non-precious alloys
- all-purpose
- can be fused

Item no.	Unit
934131	8 bars (approx. 5 g)

Composition in %

chrome	29
cobalt	62
molybdenum	4
other	Si, C, Mn

Technical specifications

area of application	before burning
flux	SHERAFLUX NE
color	white
melting point (°C)	1,071 - 1,260
working temperature (°C)	1,320



SHERAFLUX NE

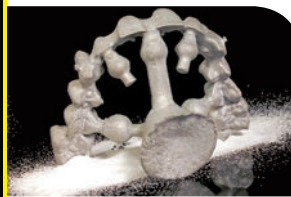
Soldering flux

- for high fusing solder
- colour: white
- due to its colour it contrasts well with the soldering object
- does not glare during soldering
- prevents the formation of an oxide layer
- optimises solder connection

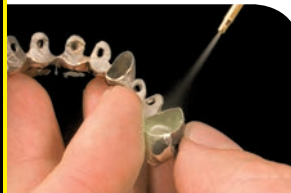
Item no.	Unit
934221	50 ml



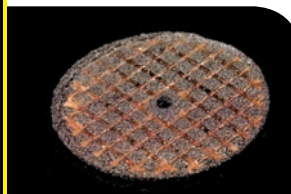
Finishing



Abrasives **68**



Occlusion Sprays **69**



Cutting Discs **70**



Polishers **72**



Polishing Agents **74**



Brushes **76**

Abrasives

SHERA abrasives are of the highest standard of quality and degree of purity possible. The hygroscopic abrasives are packed in 5 kg bags for protection against moisture. The SHERASTRAHLKORUND is delivered in 25 kg boxes.



SHERASTRAHLKORUND

95 % aluminium oxide

- colour: brown
- graining: 250 µm
- for sandblasting of chrome castings
- very hard and sharp-edged
- removes rest of investments quickly

Item no.	Unit
601011	25 kg

SHERAALUMINIUMOXID

99.7 % aluminium oxide

- colour: white

graining:

250 µm	for chrome castings
150 µm	for precious or non-precious alloy
110 µm	for precious or non-precious alloy
50 µm	for precious alloy or ceramic

Item no.	Unit
603010 (250 µm)	5 kg or 20 kg (4 x 5 kg)
602040 (150 µm)	5 kg or 20 kg (4 x 5 kg)
602030 (110 µm)	5 kg or 20 kg (4 x 5 kg)
602020 (50 µm)	5 kg or 20 kg (4 x 5 kg)
603012 (250 µm)	100 kg (4 x 25 kg)
602042 (150 µm)	100 kg (4 x 25 kg)
602032 (110 µm)	100 kg (4 x 25 kg)
602022 (50 µm)	100 kg (4 x 25 kg)



SHERAKOMBI

Combination abrasive

- colour: white
- graining: 100 – 250 µm
- for sandblasting, smoothing and matt smoothing of chrome castings
- optimised for sandblasting titanium frames
- eliminates the need for shining in an electrolyte bath

Item no.	Unit
605010	5 kg or 20 kg (4 x 5 kg)



SHERAGLANZSTRAHLPERLEN

Glass polishing beads

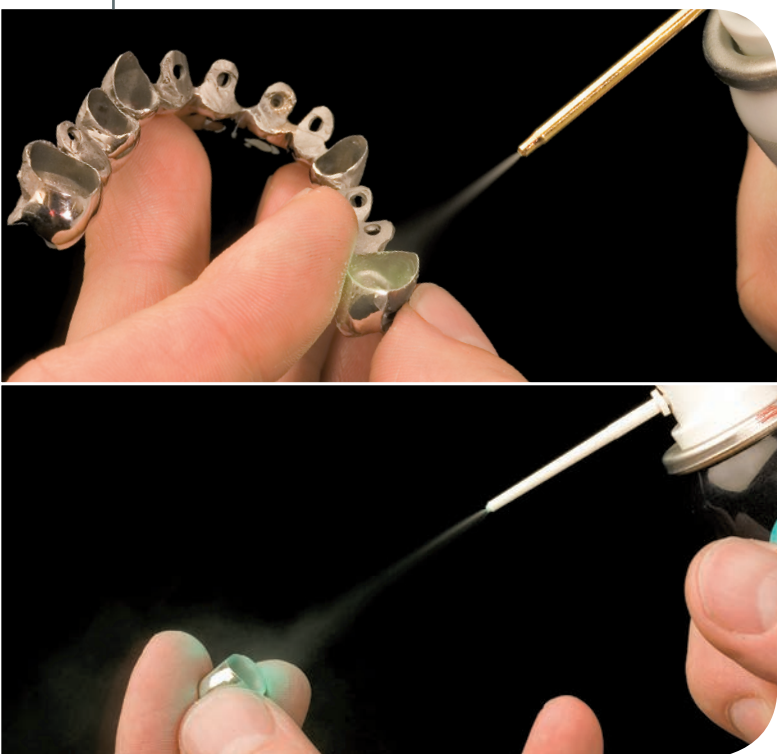
- made of lead free sodium glass
- for compressing, smoothing and polishing of metal surfaces
- non-abrasive

graining:

- 125 µm for non-precious alloys
- 50 µm for precious metal, reduced and non-precious alloys

Item no.	Unit
604030 (125 µm)	5 kg or 20 kg (4 x 5 kg)
604020 (50 µm)	5 kg or 20 kg (4 x 5 kg)

Occlusion Sprays



OKKLU-EXACT

Occlusion spray

- with very fine metal nozzle
- very homogeneous micro powder layer
- contact points can be marked exactly
- does not smear or flake
- can easily be washed or steam cleaned off
- free of solvents, grease or CFC
- can be used as spray for scanning

Item no.	Unit
914201 (green)	75 ml spray can

CONTACTSPRAY

Occlusion spray

- homogeneous micro powder layer
- contact points can be marked exactly
- does not smear or flake
- can easily be washed or steam cleaned off
- free of solvents, grease or CFC

Item no.	Unit
914101 (green)	75 ml spray can
914102 (red)	

Cutting Discs

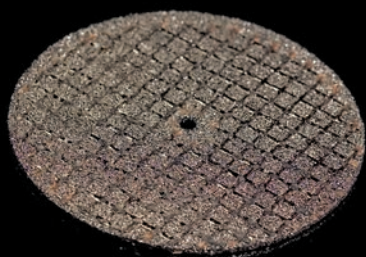
STANDARD-LINE



CUTTING DISCS

- 22 x 0.6 mm
- for steel and non-precious metal
- flexible
- long service life
- 10,000

Item no.	Unit
970201	100 pieces



CUTTING DISCS

- 40 x 0.8 mm
- for steel and non-precious metal
- reinforced with nylon mesh
- long service life
- 35,000

Item no.	Unit
970205	10 pieces

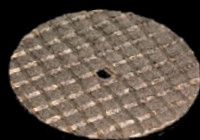


GRINDING DISCS

- 37 x 3.0 mm
- 10,000

Item no.	Unit
970206	25 pieces

ECO-LINE

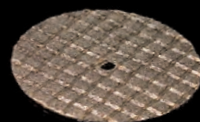


DIAMOND CUTTING DISCS

- for ceramic
- glass-fibre reinforced
- high cutting performance

- 20 x 0.25 mm
- 50,000

Item no.	Unit
970161	10 pieces



- 20 x 0.3 mm
- 50,000

Item no.	Unit
970163	10 pieces

Cutting Discs

ECO-LINE

CUTTING DISCS

- for all alloys
- glass-fibre reinforced
- good price-performance ratio

	Item no.	Unit
- 22 x 0.2 mm - ⌀ 50,000	970151	50 pieces

	Item no.	Unit
- 22 x 0.3 mm - ⌀ 50,000	970153	50 pieces

	Item no.	Unit
- 22 x 0.5 mm - ⌀ 50,000	970155	25 pieces

	Item no.	Unit
- 26 x 0.3 mm - ⌀ 50,000	970253	25 pieces

	Item no.	Unit
- 26 x 0.5 mm - ⌀ 50,000	970254	25 pieces

	Item no.	Unit
- 40 x 0.5 mm - ⌀ 38,200	970255	10 pieces

HIGH-LINE

CUTTING DISCS FIBRE REINFORCED

- 22 x 0.3 mm
- for non-precious metal, gold and ceramic
- very flexible
- extreme long service life
- ⌀ 35,000

Item no.	Unit
970110	50 pieces

- 40 x 1.0 mm
- for chrome casting and non-precious metal
- improved quality with increased cutting power
- low heat development
- extreme long service life
- ⌀ 35,000

Item no.	Unit
970210	10 pieces

Polishers

Our recommended areas of application are characterized by the following colours:



SHERA polishers can be used individually and in many ways.



WHEEL WHITE

Silicone polisher

- 22 x 3 mm
- pre-polishing
- \sim 20,000
- fine-grained, soft

Item no.	950101	Areas of application
Unit	100 pieces	

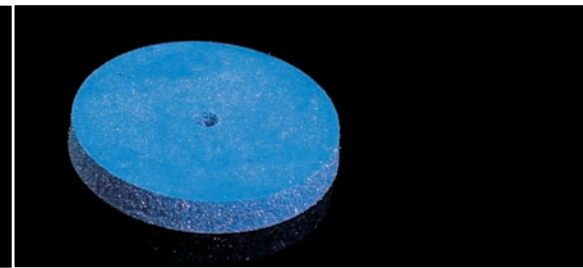


WHEEL WHITE

Silicone polisher

- 22 x 3 mm
- pre-polishing
- \sim 7,000 - 10,000
- coarse-grained, hard

Item no.	950113	Areas of application
Unit	100 pieces	

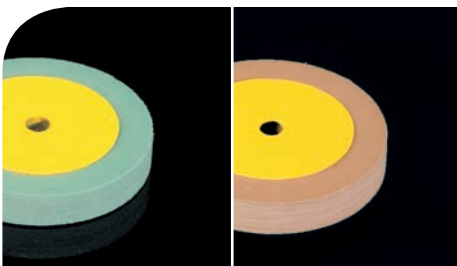


WHEEL BLUE

Silicone polisher

- 22 x 3 mm
- pre-polishing, ideally suited for the junction ceramic-metal
- \sim 20,000
- medium-grained

Item no.	950110	Areas of application
Unit	100 pieces	



ZIRCONIA POLISHERS

Diamond polishers

GREEN

- 17 x 2.5 mm
- pre-polishing
- \sim 7,000 - 10,000
- medium-grained

BROWN

- 17 x 2.5 mm
- precision polishing
- \sim 7,000 - 10,000
- fine-grained

Item no.	(Unit)	Areas of application
950501	(1 piece)	
950502	(1 piece)	



LENS WHITE

Silicone polisher

- 22 x 3 mm
- pre-polishing
- \sim 7,000 - 10,000
- coarse-grained

Item no.	950102	Areas of application
Unit	100 pieces	



LENS BLUE

Silicone polisher

- 22 x 3 mm
- pre-polishing, ideally suited for the junction ceramic-metal
- \sim 20,000
- medium-grained

Item no.	950111	Areas of application
Unit	100 pieces	



ROLLER WHITE

Silicone polisher

- \varnothing 6 mm
- pre-polishing
- \sim 20,000
- fine-grained, soft

Item no.	950103	Areas of application
Unit	100 pieces	



ROLLER WHITE

Silicone polisher

- \varnothing 7 mm
- pre-polishing
- \sim 7,000 - 10,000
- coarse-grained, hard

Item no.	950114	Areas of application
Unit	100 pieces	



ROLLER BLACK

Silicone polisher

- \varnothing 6 mm
- pre-polishing
- \sim 20,000
- medium-grained

Item no.	950107	Areas of application
Unit	100 pieces	



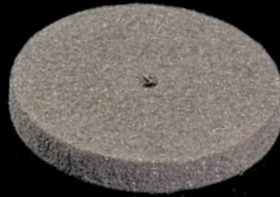
WHEEL GREEN

Silicone polisher

- 22 x 3 mm
- high-lustre polishing
- \odot 20,000
- fine-grained

Item no. 950403 Areas of application

Unit 100 pieces 



WHEEL BLACK

Silicone polisher

- 22 x 3 mm
- pre-polishing
- \odot 20,000
- medium-grained

Item no. 950106 Areas of application

Unit 100 pieces 



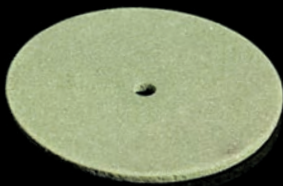
WHEEL GREY

Silicone polisher

- 22 x 3 mm
- pre-polishing of titanium materials
- \odot 20,000
- medium-grained

Item no. 950307 Areas of application

Unit 25 pieces 



INTERDENTAL RUBBER GREEN

- 22 x 1 mm
- pre-polishing
- \odot 10,000
- fine-grained

Item no. 950304 Areas of application

Unit 25 pieces 



OCCUSAL POLISHER RED

- \varnothing 3 mm
- precision polishing
- \odot 20,000
- medium-grained

Item no. 950305 Areas of application

Unit 100 pieces 



OCCUSAL POLISHER BROWN

- \varnothing 3 mm
- pre-polishing
- \odot 20,000
- coarse-grained

Item no. 950109 Areas of application

Unit 100 pieces 



ROLLER GREEN

- \varnothing 6 mm
- precision polishing
- \odot 10,000
- fine-grained

Item no. 950303 Areas of application

Unit 100 pieces 

www.shera.de



ROLLER RED

- \varnothing 6 mm
- pre-polishing
- \odot 15,000
- extra coarse-grained

Item no. 950104 Areas of application

Unit 100 pieces 



ROLLER BROWN

- \varnothing 7 mm
- precision polishing
- \odot 20,000
- coarse-grained

Item no. 950302 Areas of application

Unit 100 pieces 

Polishing Agents

SHERA polishing agents contain neither quartz nor cadmium and achieve a brilliant high-lustre finish in no time at all. The polishing agents do not smear and remove black residues from the metal surfaces.



SHERAPOL 701

Pre- and high-lustre polishing paste

- colour: green
- for all alloys, ceramics and composites
- especially for gold and titanium
- very fast and efficient
- excellent shine

Item no.	Unit
954101	approx. 300 g bar

SHERAPOL 704

Pre- and high-lustre polishing paste

- colour: red
- for all alloys
- especially for chrome and non-precious alloys
- saves polishing time
- very economic
- excellent shine

Item no.	Unit
954104	approx. 300 g bar

SHERAPOL 705

Universal polishing paste

- colour: white
- for all alloys, acrylics and ceramics
- polishes chrome dentures in one step

Item no.	Unit
954105	approx. 300 g bar

SHERAPOL 706

High-lustre polishing paste

- colour: brown
- for all acrylics and composites
- gives a natural shine
- seals surfaces

Item no.	Unit
954106	approx. 200 g bar

SHERAPOL-RESIN

High-lustre polishing paste

- colour: white
- for all acrylics and composites
- excellent high-lustre in short time
- especially appropriate for TSM ACETAL DENTAL and SMILE-CAM
- fast and economic

Item no.	Unit
954110	approx. 100 g bar





SHERALUX 711

High-lustre polishing emulsion

- colour: pink
- for acrylics and alloys
- brilliant high-lustre finish in short time
- seals surfaces
- economic in use

Item no.	Unit
954211	100 ml tube
954212	500 g bottle



SHERALUX 715

High-lustre polishing cream

- colour: pink
- for acrylics and alloys
- brilliant high-lustre finish in short time
- seals surfaces
- removes small scratches from the acrylic
- economic in use

Item no.	Unit
954215	300 g can



SHERABIMSPASTE

Polishing paste

- pleasant smell
- for pre-polishing of acrylics

Item no.	Unit
954301	5 kg bucket



SHERABIMSSTEINPULVER

- for pre-polishing of acrylics and ceramics
- medium-grained

Item no.	Unit
954310	5 kg bucket
954311	22.5 kg

SHERABIMFLUID AB

Mixing liquid for pumice powder

- protects hands from drying out
- pleasant smell
- oily consistency
- can be diluted with water

Item no.	Unit
709100	1 litre
709101	5 litres



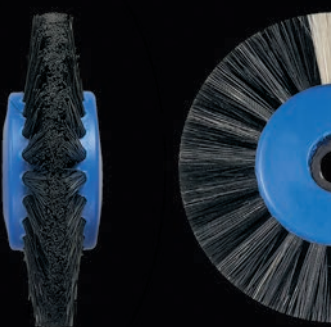
CHUNGKING BRISTLES 50 mm

2-row brush

- for polishing of crown, bridge and chrome works
- pointed

Item no. 910202

Unit 1 piece



CHUNGKING BRISTLES 55 mm

3-row brush

- for polishing of crown, bridge and chrome works
- pointed

Item no. 910203

Unit 1 piece



CHUNGKING BRISTLES 65 mm

2-row brush

- for polishing of crown, bridge and chrome works
- very hard, short and pointed

Item no. 910101

Unit 1 piece



CHUNGKING BRISTLES 50 mm

2-row brush with wooden hub

- for polishing of acrylics and metals
- pointed

Item no. 910207

Unit 1 piece



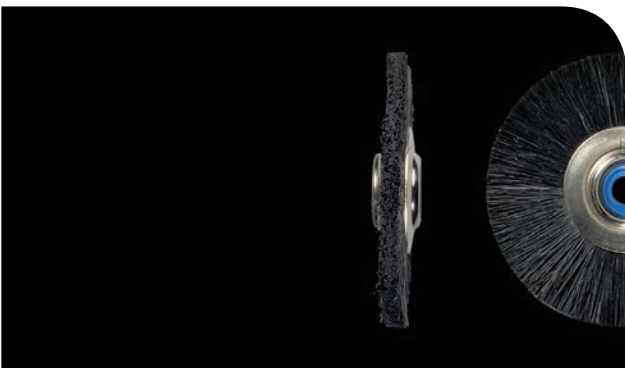
CHUNGKING BRISTLES 55 mm

3-row brush with wooden hub

- for polishing of acrylics and metals
- pointed

Item no. 910208

Unit 1 piece



CHUNGKING BRISTLES 48 mm

Slim brush

- for polishing of crown, bridge and chrome works
- black

Item no. 910209

Unit 1 piece



HORSE'S HAIR 48 mm

Slim brush

- ideally suited for polishing of the interface between acrylic and metal
- mottled

Item no. 910211

Unit 1 piece



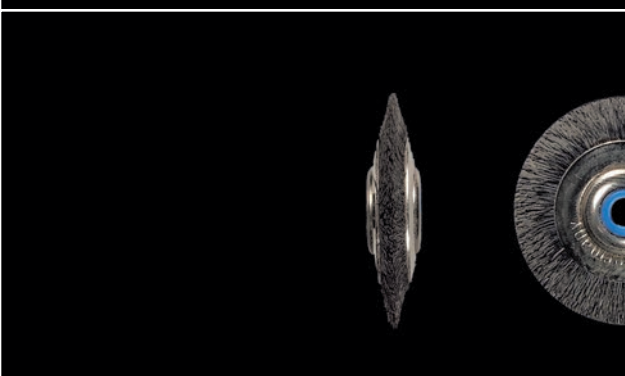
GOAT'S HAIR 48 mm

Slim brush

- for polishing of acrylics
- white

Item no. 910210

Unit 1 piece



CHUNGKING BRISTLES 36 mm

Slim brush

- for hard-to-reach spaces
- very hard, ground short and pointed
- black

Item no. 910206

Unit 1 piece



CHUNGKING BRISTLES 45 mm

1-row brush

- especially suitable for polishing of interdental spaces
- for final polishing of fine contours of acrylic dentures
- black

Item no. 910205

Unit 1 piece



SPECIAL LINING 80 mm

5-ply brush

- for pre-polishing of acrylic
- chunking bristles with special tissue and special textile lining
- special lining save pumice powder for a quick polishing
- for the rational high-lustre polishing of all prosthesis (PMMA) and composites
- high polishing effectiveness

Item no. 910105

Unit 1 piece



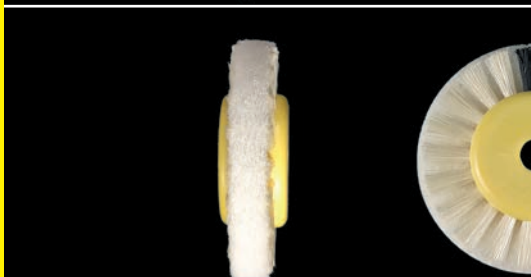
SPECIAL LINING 80 mm

3-ply brush

- for pre-polishing of acrylic
- chunking bristles with special textile lining
- special lining save pumice powder for a quick polishing
- for the rational high-lustre polishing of all prosthesis (PMMA) and composites

Item no. 910104

Unit 1 piece



SPECIAL LINING 45 mm

3-ply brush

- for pre-polishing of acrylic
- chunking bristles with special textile lining
- special lining save pumice powder for a quick polishing
- for the rational high-lustre polishing of all prosthesis (PMMA) and composites

Item no. 910201

Unit 1 piece



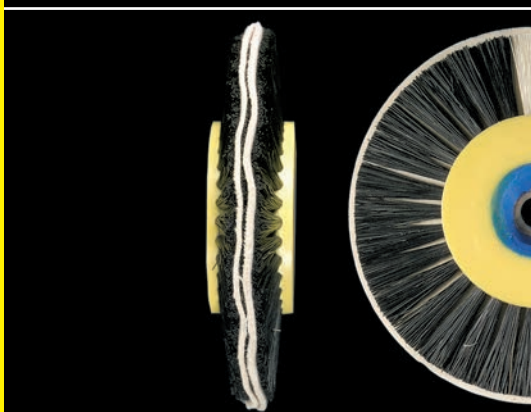
SPECIAL LINING 48 mm

3-ply brush

- for pre-polishing of acrylic
- black chunking bristles with special textile lining

Item no. 910204

Unit 1 piece



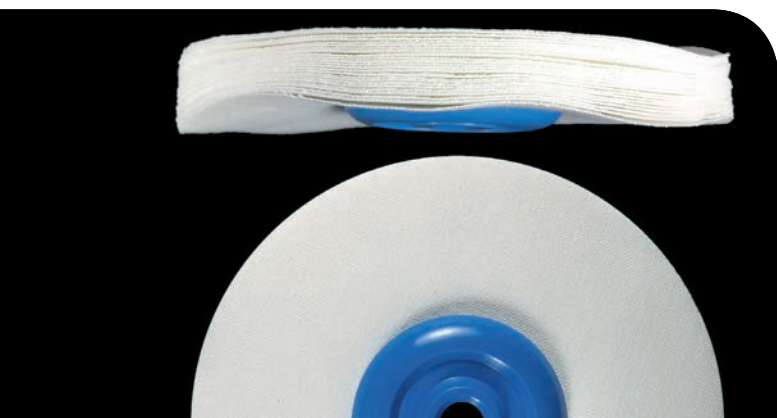
NETTLE CLOTH LINING 80 mm

5-ply brush

- for pre-polishing of acrylic
- chunking bristles with nettle cloth lining

Item no. 910102

Unit 1 piece



NETTLE CLOTH BUFFER 100 mm

cotton, 24-layers

- for high-lustre polishing of metals and acrylic

Item no. 910402

Unit 1 piece



POLISHING NETTLE CLOTH BUFFER 100 mm

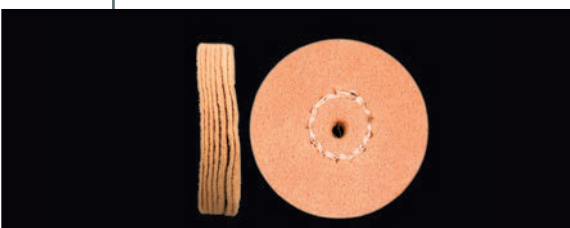
ZETA-tissue, 15-layers

- for high-lustre polishing of metals and acrylic
- high-value special tissue
- no fraying out

Item no. 910405

Unit 1 piece

Hand piece brushes



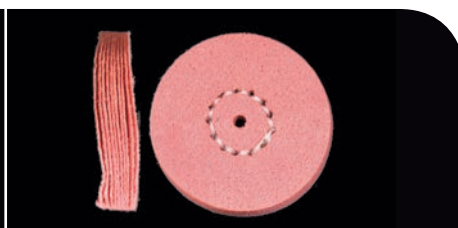
FELT BRUSH HP ORANGE 22 mm

Hand piece brush, pre-polishing

- for pre-polishing acrylics and veneering composite
- to be used without polishing paste
- maintains the material structures
- medium-grained
- 22 x 3 mm
- ∅ 5,000 - 7,000

Item no. 910318

Unit 6 pieces



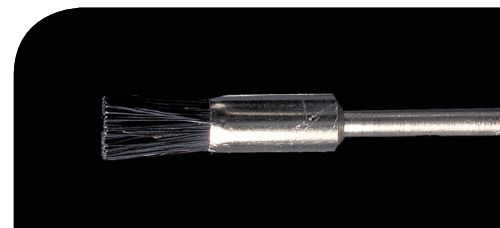
FELT BRUSH HP PINK 22 mm

Hand piece brush, high-lustre polishing

- for high-lustre polishing acrylics and veneering composites
- to be used without polishing paste
- maintains the material structures
- fine-grained
- 22 x 3 mm
- ∅ 5,000 - 7,000

Item no. 910317

Unit 6 pieces



BRUSH HP

Hand piece brush

- chunking bristles
- black
- ∅ 10,000

Item no. 910308

Unit 12 pieces



CHUNGKING BRISTLE HP 19 mm

Hand piece brush

- unmounted
- black
- ∅ 10,000

Item no. 910306 (∅ 19 mm) Unit 12 pieces



HORSE'S HAIR HP 19 mm

Hand piece brush

- unmounted
- mottled
- ∅ 10,000

Item no. 910315 (∅ 19 mm) Unit 12 pieces



GOAT'S HAIR HP 16 mm / 19 mm

Hand piece brush

- unmounted
- white
- ∅ 10,000

Item no. 910302 (∅ 16 mm) 12 pieces
910307 (∅ 19 mm)



NETTLE CLOTH BUFFER HP 19 mm

Hand piece brush

- unmounted
- ∅ 8,000 - 12,000

Item no. 910304 (∅ 19 mm) Unit 12 pieces



Acrylics



Denture Acrylics **82**



Orthodontic Acrylic **84**



Separating Agent **84**



Tray Materials **85**

Denture Acrylics

The outstanding quality of SHERA acrylics has proven itself over many years. They are based on methyl methacrylate, are cadmium free and are very

compatible. SHERA acrylics are matched so that heat cure dentures can be completed or repaired discretely by cold cure acrylic.



SHERAPRESS

Cold cure acrylic

- for dough and casting technique
- for the production of partial, repair and total dentures
- especially low shrinkage
- malleable phase of approx. 3 minutes

Item no.	Unit
502010 (pink)	1 kg
502020 (pink opaque)	
502030 (clear)	
502040 (pink veined)	
502050 (pink transparent veined)	

LIQUID for SHERAPRESS

Item no.	Unit
508020	500 ml
508021	1000 ml

TIP



SHERATEC

provides good service being a reliable separator between stone / plaster and acrylic. You find it on page 84.

SHERAPRESS-FLEX

Cold cure acrylic

- for dough and casting technique
- for the production of partial, repair and total dentures
- especially low shrinkage
- malleable phase of approx. 20 minutes

Item no.	Unit
502060 (pink)	1 kg

LIQUID for SHERAPRESS-FLEX

Item no.	Unit
508030	500 ml

TIP



Applying the SILIKONSPRAY on the overbite you will achieve even smoother and more aesthetic acrylic surfaces. At the same time, this rich spray serves for the maintenance of devices – a real all-rounder! You find it on page 32.



SHERADON

Heat cure acrylic

- for press and injection technique
- for the production of partial, repair and total dentures
- especially low shrinkage
- malleable phase of approx. 20 minutes

Item no.	Unit
501010 (pink)	1 kg
501020 (pink veined)	
501030 (pink transparent veined)	

LIQUID for SHERADON

Item no.	Unit
508010	500 ml

Denture cleaner



SHERAFINISH

Acrylic denture cleaner

- for finishing dentures
- cleans acrylic dentures
- binds any traces of residual monomer
- gives a great shine to the appliance and leaves a pleasant, fresh taste

Item no.	Unit
990101	75 ml spray can

Orthodontic Acrylic



SHERAORTHOMER

Cold cure acrylic

- for dough and casting technique
- for orthodontic works
- hardens homogeneously
- very durable
- exceptionally stable

Item no.	Unit
504010	1 kg

LIQUID for SHERAORTHOMER

Item no.	Unit
508040 (pink)	500 ml
508050 (clear)	

Separating agent



TIP



The corresponding orthodontic plasters are presented on page 24. Just rely on manufacturer's high quality!

SHERATEC

Separating agent based on alginate

- colour: clear
- separates stone / plaster against acrylic
- is absorbed completely by the stone / plaster
- very thin separating film
- formaldehyde and silicone free

Item no.	Unit
701066	500 ml



LIGHT CURE TRAY MATERIAL

Tray material

- pre-formed sheets
- for production of individual trays
- easy to adapt
- highly dimensionally stable

Item no.	Unit
505081 (blue opaque UJ)	50 sheets
505082 (blue transparent UJ)	
505083 (pink opaque UJ)	
505084 (pink transparent UJ)	
505085 (natural-coloured UJ)	



SHERATRAY

Tray material

- for the production of individual trays
- for base plates for bite registration
- for try-ins
- easy to mix and to process
- tear-resistant, highly dimensionally stable

Item no.	Unit
505010 (blue)	1 kg
505030 (yellow)	
505040 (green)	
505050 (white)	

LIQUID for SHERATRAY

Item no.	Unit
508080	500 ml



SHERALÖFFEL-FLUID

Cleaning fluid for light cure tray materials

- removes dispersion layer
- enhances the colour of the manufactured tray

Item no.	Unit
702225	500 ml



Miscellaneous



Cleaning Agents **88**

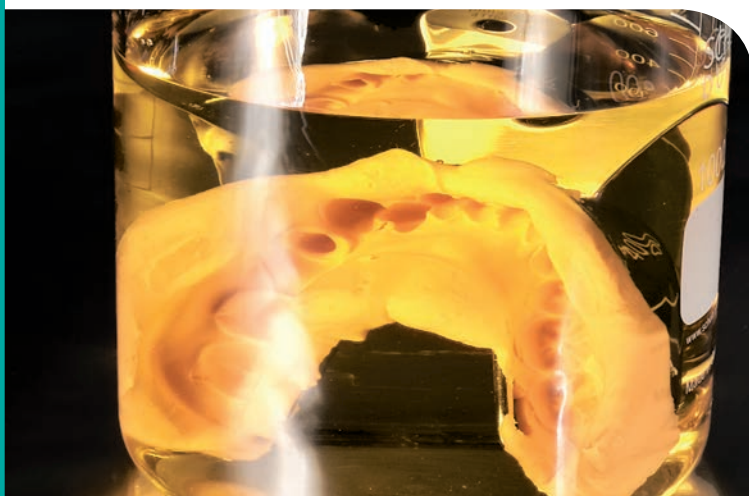


Skin Care **90**



Brushes **92**

Cleaning Agents



SHERASON 929

Alginate solvent, concentrated liquid

- cleans all trays, mixing bowls and tools
- does not corrode metal
- the product can be diluted 1:10 with water
- very economical in use

Item no.	Unit
702090	1 litre
702091	5 litres



SHERASON 927

Denture cleaner

- removes tartar, cements, stones / plasters, investments, oxides and fluxing agents
- can be diluted 1:1 with water
- can be used with or without ultrasound
- very quick acting
- should only be used in a glass container with lid

Item no.	Unit
702070	1 litre



SHERAWAX-EX

Concentrate for boiling out wax

- especially developed for machines for boiling out waxes
- dissolves wax from models and devices
- very economic
- fresh citric fragrance
- biodegradable
- recommended mixing ratio 1:100

Item no.	Unit
702230	1 litre
702231	5 litres



SHERASON 925

Ultra sonic cleaner

- for laboratories, surgeries, offices and households
- concentrate, can be diluted 1:10 with water
- cleans all materials
- very effectively

Item no.	Unit
702050	1 litre
702051	5 litres



SHERASONIC

Environmentally friendly ultrasonic cleaner

- biodegradable
- for laboratories, surgeries, offices and households
- cleans all materials
- very effectively
- does not corrode metal surfaces
- concentrate, can be diluted 1:10 or up to 1:12 with water

Item no.	Unit
702100	1 litre
702101	5 litres

TIP



SHERASONIC - one for all

SHERASONIC is a concentrate which can be diluted twelve times with water and cleans very effectively. You can use SHERASONIC not only in the ultrasonic bath, but also as an universal cleaning agent – everything will be brightly polished in a very short time!



new
fragrance

SHERACLEAN 50

Hand washing lotion for slight dirt

- mild cleansing and moisturising washing lotion
- with cosmetic detergent base material
- fresh fragrance of melon
- high quality moisturising agents provide a pleasant and soft feeling to the skin
- free of silicones, solvents and soap
- adjusted pH value of the skin
- dermatologically tested

Item no.	Unit
932111	500 ml
932112	5 litres



SHERACLEAN 100

Cream hand wash

- neutral fragrance
- colour: vanilla
- mild and nurturing
- moisturising
- phosphate and formaldehyde-free
- pH-neutral
- biodegradable

Item no.	Unit
932202	10 litres



new
formula

SHERACLEAN 150

Protective hand cream – ideally suited when wearing gloves

- contains skin protecting special soft scrub beads
- provides the skin with valuable moisturising substances
- fresh lemon fragrance
- low in allergens
- contains aloe vera – supports the natural skin regeneration
- free of silicones, solvents and soap
- adjusted pH value of the skin
- dermatologically tested

Item no.	Unit
932301	2.5 litres
932302	5 litres

PUMP for 2.5 litres bottle

SHERACLEAN 150

Item no.	Unit
992103	1 piece



SHERACARE

High-quality and rich skin care cream

- especially skin calming
- high lipid replenishing and moisturising effect
- containing high value care complex
- long-lasting effect
- quickly absorbed
- for all skin types
- dermatologically tested

Item no.	Unit
932410	50 ml airless dispenser



SHERAGLOVE

Protective hand cream – ideally suited when wearing gloves

- absorbs very quickly
- protective care for the everyday work life
- especially suitable in case of frequent washing and disinfecting
- has an replenishing and moisturising effect
- free of dyes
- for all skin types
- dermatologically tested

Item no.	Unit
932405	500 ml



PROTECTODERM

Hand protection cream

- with aloe vera, jojoba oil, shea butter
- without silicones
- protects against acids, lyes, disinfectants, methacrylics, plasters, ceramics, various solvents and adhesives
- frost-sensitive

Item no.	Unit
932402	1000 ml incl. pump

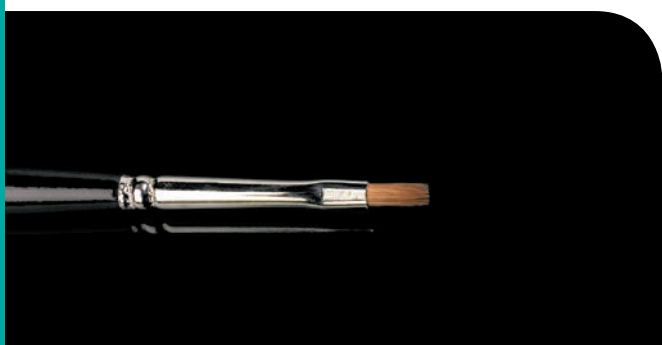


RED SABLE BRUSHES

Brushes for ceramic layering

- from fine, genuine red sable hair
- with a seamless silver ferrule

Item no.	Unit
946201 (size 1)	1 piece
946202 (size 2)	
946203 (size 3)	
946204 (size 4)	
946205 (size 5)	
946206 (size 6)	
946208 (size 8)	
946210 (size 10)	



OPAKER BRUSH

Kolinsky flat brush

Item no.	Unit
946302 (size 2)	1 piece

This image shows a full page of blank graph paper. The grid consists of thin, light gray horizontal and vertical lines that intersect to form small squares across the entire surface. There are no margins, text, or other markings on the paper.

Product index

A

Abrasives	68 - 69
Acrylic dentures	82 - 84
Acrylic for denture repairs	82 - 83
Acrylics	27, 40, 82 - 84
Adhesives	32
Agar-Agar, duplicating gels	56 - 57
Alginate solvent	88
Alloys	59 - 63
Aluminium oxide	68
Articulating plasters	25 - 26

B

Bio casting ring liner	52
Bi-Pin	33
Bonding agent	64
Bonding alloy	60 - 61
Brushes	76 - 79, 92
Buffer	79

C

Casting ring liner	52
Ceramic bonding agent	64
Chrome investments	50
Cleaning agent for acrylic denture	83, 88
Cleaning agent for impression tray	88
Cleaning agents	83, 88 - 89
Cleaning fluid for tray materials	85
Cold cure acrylics	82, 84
Concentrate for boiling out wax	88
Correction material	36
Covering liquid	64
Cream hand wash	90
Crown and bridge alloys	60 - 61
Crown and bridge investments	46 - 49
Cutting discs	70 - 71
Cyanoacrylate adhesives	32

D

Deep drawing foils	40
Denture cleaner	83, 88
Die spacer	40
Dipping hardener	53
Dowel pins	33
Drill	33
Duplicating flask	55
Duplicating gels	56 - 57
Duplicating materials	54 - 57
Duplicating silicones	54 - 55

E

Electrolyte	64
-------------	----

F

Flux	65
Frame cleaner	64

G

Gingival masks	34
Graduated pin	33
Grinding discs	70

H

Hand protection cream	91
Hand piece brushes	79
Hard plasters	23 - 24
Heat cure acrylic	83
Heat shielding and isolating paste	65

I

Impression silicone	36
Impression spray	30
Injection wax	42
Instant adhesive	32
Intra oral tips	34
Investment for rapid prototyping	49
Investment for telescopic crown technique	48
Investment for titanium casting	49
Investments	45 - 50
Isolating agents	31 - 32, 84

L

Laser welding wires	65
Light cure tray material	85
Liquid	51

M

Maintenance spray	32
Milling bur	34
Mixing gun	34
Mixing liquid for investments	51
Mixing liquid for pumice powder	75
Mixing nozzles	34
Model adhesive	53
Model casting alloys	62 - 63
Model gloss agent	27
Model hardener	27, 53
Model resin	27
Modelling resin	40
Modelling stones / plasters	16 - 24
Modelling wax	41
Mould former	52

N

Non-precious alloys	60 - 61
---------------------	---------

O

Occlusion spray	69
Opaker brush	92
Orthodontic cold cure acrylic	84
Orthodontic plasters	24

P

Paste for pre-polishing acrylics	74, 75
Paste hardener	37
Pin bur	33
Pins	33
Plasters, fast setting	21
Polishers	72 - 73
Polishing agents	74 - 75
Polishing beads	69

P

Polishing brushes	79
Polishing electrolyte	64
Polyurethane	27
Pumic powder	75

R

Red sable brushes	92
-------------------	----

S

Separating agents	31 - 32, 84
Silicone	34 - 37, 54 - 55
Silicone duplication materials	54 - 55
Silicone putties	35 - 37, 54 - 55
Silicone spray	32
Soap	90
Solder	65
Soldering agents	65
Stone gloss agent	27
Stone precipitating agent	27
Stone / Plaster hardener	27
Stone / Plaster separating agent	31
Stone / Plaster solvent	27
Stones / Plasters	15 - 26
Stones / Plasters for basing arches	22
Super hard stones	16 - 22
Surface tension release agent	30

T

Tapered pin	33
Thinner	40, 53
Tray material	85

U

Ultrasonic cleaner	89
Underlay foils	40
Universal cleaner	89
Universal separating agents	31

W

Waxes	41 - 43
Welding wires	65

A

SHERAADHESO	25
... ALABASTER	24
... ALEOS	61
... ALLOY-NI	61
... ALLOY-NP	60
... ALPIN	23
... ALUMINIUMOXID	68
... AQUA	19
... ARTI	25
... ARTI-QUICK	26

B

SHERABIANCO	24
... BIMFLUID AB	75
... BIMSPASTE	75
... BIMSTEINPULVER	75
... BIO-MUFFELVLIES	52
... BOND	32
... BRILLIANT	27

C

SHERACARE	91
... CAST	50
... CAST 2000	50
... CASTINGSTICKS	42
... CLEAN 50	90
... CLEAN 100	90
... CLEAN 150	90
... CRYSTAL	34
... CYANO-C	32

D

SHERADAN	64
... DECALON	64
... DENT	60
... DON	83
... DUBLE	57
... DUETT	35
... DUETT-HARD	35
... DUETT-SOFT	35
... DUETT-SUPERSOFT	35
... DUPLICA	36
... DUPLICA-HARD	36
... DYNAMIC	23

E

SHERAEXACT 85	37
... EXACT 95	37

F

SHERAFAVORIT	20
... FINA® 2000	46
... FINA®-RAPID	47
... FINISH	83
... FLOC	27
... FLUX NE	65
... FORM	57
... FRIXION	48

G

SHERAGEL	56
... GINGIVAL	34
... GLANZSTRAHLPERLEN	69
... GLOVE	91

H

SHERAHARD-ROCK	16
... HYDROKOL	56

I

SHERAISOLEX	31
-------------	----

J

SHERAJIVE	21
-----------	----

K

SHERAKFO-GIPS	24
... KOMBI	68

L

SHERALIQUID	51
... LIQUID EXTRA	51
... LIT-CYLINDRA	63
... LIT-ELASTIC	62
... LIT-IMPERIAL	62
... LÖFFEL-FLUID	85
... LOT-N	65
... LUX 711	75
... LUX 715	75

M

SHERAMAGIC-GREEN	47
... MASTER	30
... MAXIMUM	17
... MAXIMUM 2000	17
... MEGA 2000	32
... MODELLHAFTGRUND	53
... MOUNT	26
... MUFFELFORMER K&B	52
... MUFFELFORMER MG	52
... MUFFELFORMER RP	52

N

SHERANAXOS	63
------------	----

O

SHERAORTHOMER	84
---------------	----

P

SHERAPASTENHÄRTER	37
... PLAST	40
... PLASTER	23
... POL 701	74
... POL 704	74
... POL 705	74
... POL 706	74
... POLAN 2 : 1	27
... POL-RESIN	74
... PORAL	53
... POR-L	53
... PREMIUM	19
... PRESS	82
... PRESS-FLEX	82
... PRIMA	20
... PURE	18

R

SHERARELAXA	30
... REPRO-WAX	42

S

SHERASEPAL-U	31
... SEPARAT	31
... SEP-G	31
... SIL-EXTRA LIGHT	36
... SOCKEL-FLÜSSIG	22
... SON 925	89
... SON 927	88
... SON 928	27
... SON 929	88
... SONIC	89
... STRAHLKORUND	68
... STUMPFACK	40

T

SHERATEC	32, 84
... TITAN-EASY	49
... TRAY	85
... TWIST 60	36

V

SHERAVEST RP	49
--------------	----

W

SHERAWAX-EX	88
-------------	----



SHERA
Werkstoff-Technologie
GmbH & Co. KG



Espohlstrasse 53 · 49448 Lemförde
Germany



+ 49 (0) 54 43 - 99 33 - 0



+ 49 (0) 54 43 - 99 33 - 100



info@shera.de



www.shera.de